



Standard Colors



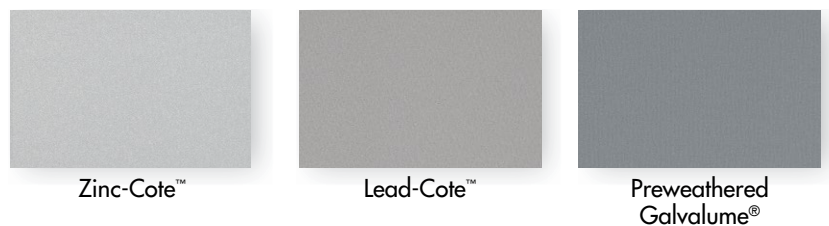
Premium Colors

Berridge premium colors require a nominal surcharge.



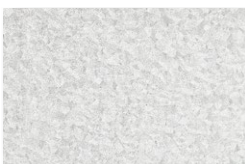
Metallic Colors

Berridge metallic colors are premium finishes which require a nominal surcharge.



Natural Metal Finish

Berridge Acrylic-Coated Galvalume® is a coated sheet product that combines the corrosion resistance of GALVALUME® steel sheet with a clear, organic resin applied to the top side and bottom side of GALVALUME® substrate.



Acrylic-Coated Galvalume®

BERRIDGE STOCK AVAILABILITY AND COLOR DETAILS

S - Stock Color N - Non-Stocking Color N/A - Not Available

Standard Colors	24 Gauge		22 Gauge*		0.032 Aluminum*		0.040 Aluminum*		SR	EM	SRI
	48"	42"	48"	42"	48"	42"	48"	42"			
Aged Bronze	S	S	S	N	S	N	S	N/A	0.30	0.86	30
Almond	S	S	S	N	S	N	S	N/A	0.65	0.83	77
Bristol Blue	S	S	N	N	N	N	N	N/A	0.33	0.85	33
Buckskin	S	S	S	N	N	N	N	N/A	0.32	0.83	32
Burgundy	S	S	N	N	N	N	N	N/A	0.29	0.85	29
Charcoal Grey	S	S	S	N	N	N	N	N/A	0.29	0.84	28
Cityscape	S	S	N	N	N	N	N	N/A	0.48	0.87	54
Colonial Red	S	S	N	N	N	N	N	N/A	0.33	0.85	34
Copper Brown	S	S	N	N	N	N	N	N/A	0.30	0.85	29
Dark Bronze	S	S	S	N	S	N	S	N/A	0.28	0.85	27
Deep Red	S	S	N	N	N	N	N	N/A	0.39	0.84	41
Evergreen	S	S	N	N	N	N	N	N/A	0.30	0.85	30
Forest Green	S	S	S	N	N	N	N	N/A	0.25	0.83	22
Hartford Green	S	S	N	N	N	N	N	N/A	0.28	0.83	26
Hemlock Green	S	S	N	N	N	N	N	N/A	0.31	0.83	30
Matte Black	S	S	N	N	N	N	N	N/A	0.26	0.89	26
Medium Bronze	S	S	S	N	S	N	S	N/A	0.31	0.85	31
Parchment	S	S	S	N	S	N	S	N/A	0.52	0.83	58
Patina Green	S	S	N	N	N	N	N	N/A	0.34	0.86	36
Royal Blue	S	S	N	N	N	N	N	N/A	0.26	0.85	25
Shasta White	S	S	S	N	S	N	S	N/A	0.60	0.84	70
Sierra Tan	S	S	S	N	S	N	S	N/A	0.39	0.85	42
Teal Green	S	S	N	N	N	N	N	N/A	0.27	0.87	27
Terra - Cotta	S	S	N	N	N	N	N	N/A	0.32	0.83	31
Zinc Grey	S	S	S	N	S	N	S	N/A	0.39	0.85	42
Acrylic-Coated Galvalume®	S	S	S	S	N/A	N/A	N/A	N/A	0.67	0.20	59
Premium Colors*											
Award Blue	S	S	N	N	N	N	N	N/A	0.17	0.83	11
Natural White	S	S	N	N	N	N	N	N/A	0.76	0.84	93
Metallic Colors*											
Antique Copper-Cote	S	S	N	N	N	N	N	N/A	0.33	0.84	34
Champagne	S	S	N	N	N	N	N	N/A	0.40	0.85	43
Copper-Cote™	S	S	N	N	N	N	N	N/A	0.51	0.85	59
Lead-Cote™	S	S	N	N	N	N	N	N/A	0.46	0.84	50
Preweathered Galvalume®	S	S	N	N	N	N	N	N/A	0.40	0.85	43
Zinc-Cote™	S	S	N	N	N	N	N	N/A	0.52	0.83	59

Testing results for Kynar 500®/Hylar 5000® coil coating applications:

- Specular Gloss: (ASTM D-523) Low and medium gloss only
- Color Uniformity: (ASTM D-2244) Color controlled both instrumentally and visually
- Dry Film Thickness: (ASTM D-7091, ASTM D-1005, NCCA 11-13, 11-14, 11-15) Primer 0.20 ± 0.05 mil, Topcoat 0.75 ± 0.05 mil
- Hardness: (ASTM D-3363, NCCA 11-12, Eagle Turquoise Pencils) HB Minimum
- Adhesion (X-Cut): (ASTM D-3359) No adhesion loss
- Adhesion (Crosshatch): (ASTM D-3359) No adhesion loss
- Abrasion Coefficient: (ASTM D-968) 100 liters/mil topcoat
- Direct Impact Flexibility: (ASTM D-2794, Gardner Impact Tester, 1/10" Distortion) Excellent, no removal
- Reverse Impact Flexibility: (NCCA Spec. 11, ASTM D-2794, Gardner Impact Tester, 5/8" ball Impact force in inch pounds equal to metal thickness) Excellent, no cracking or loss of adhesion
- Formability: (ASTM D-4145, 180° T-Bend on 1/8 Mandrel) No cracks or loss of adhesion
- Erosion: (20 years, 45° South Florida) Maximum 15% loss
- Humidity Resistance: (ASTM D-2247) Passes 2000 hours on Galvalume® and 4000 hours on Aluminum
- Acid Resistance: (ASTM D-1308, Proc. 3.1.1, 10% Sulfuric Acid spot test, 24 hour exposure) Excellent, no effect
- Salt Spray Resistance: (ASTM B-117) Passes 2000 hours on Galvalume® and 4000 hours on Aluminum
- Alkali Resistance: (ASTM D-1308, Proc. 5.2, 10% Sodium Hydroxide, 24 hour exposure) Excellent, no effect
- Detergent Resistance: (ASTM D-2248, 72 hours immersion in 3% solution at 100°F) Excellent, no effect
- Resistance to Acid Pollutants: (ASTM D 1308 Proc. 3.1.1, 24 hour exposure 10% HNO₃ vapors) Excellent, no effect
- Weathering - Color Retention: (ASTM D-2244, 20 years, 45° South Florida) Maximum 5 NBS units color change
- Weathering - Chalk Resistance: (ASTM D-4214, 20 years, 45° South Florida) Not worse than No. 8 rating

Notes:

1. ASTM - American Society for Testing Materials
2. NCCA - National Coil Coaters Association
3. Galvalume® is 55% Aluminum-Zinc alloy coated sheet steel and is a registered trademark of BIEC International Inc.

S Stock Color; Not subject to a minimum order

N Non-Stock Color; Subject to inventory on hand; 4,500 sf minimum order for 22 Gauge and 0.032 & 0.040 Aluminum

N/A Not Available

* Consult BMC on product availability for 22 Gauge and 0.032 and 0.040 Aluminum. Premium and Metallic colors are subject to a surcharge, contact BMC for additional information

**BMC SAN ANTONIO
CORPORATE HQ**
6515 Fratt Rd.
San Antonio, TX 78218
210-650-3050
Fax: 210-650-0379

**BMC SEGUIN
MANUFACTURING**
2201 Rudeloff Rd.
Seguin, TX 78155
830-401-5200
Fax: 830-303-0530

**BMC HOUSTON
BRANCH FACILITY**
1720 Maury St.
Houston, TX 77026
713-223-4971
Fax: 713-236-9422

**BMC DALLAS
BRANCH FACILITY**
2015 California Crossing
Dallas, TX 75220
972-506-8496
Fax: 972-506-8478

**BMC DENVER
BRANCH FACILITY**
7505 E. 41st Ave.
Denver, CO 80216
303-322-3703
Fax: 303-322-3810

**BMC CHICAGO
BRANCH FACILITY**
1175 Carolina Dr.
W. Chicago, IL 60185
630-231-7495
Fax: 630-231-7520

**BMC PHOENIX
BRANCH FACILITY**
5717 W. Washington St.
Phoenix, AZ 85043
602-385-1237
Fax: 210-650-0379

**BMC ATLANTA
BRANCH FACILITY**
319 Lee Industrial Road
Austell, GA 30168
770-941-5141
Fax: 770-941-7344

**BMC OKLAHOMA CITY
BRANCH FACILITY**
1400 Exchange Ave.
Oklahoma City, OK 73108
405-248-7404
Fax: 210-650-0379

**BMC KANSAS CITY
BRANCH FACILITY**
1235 Southwest Blvd.
Kansas City, KS 66103
913-227-0855
Fax: 210-650-0379

**BERRIDGE CALIFORNIA
SALES CORPORATION****
8442 Sultana Ave.
Fontana, CA 92335
562-402-2081
Fax: 562-865-7878

**BERRIDGE FLORIDA
SALES CORPORATION****
8802 Venture Cove
Tampa, FL 33637
813-335-4505
Fax: 210-650-0379

**Berridge California and Florida Sales Corporations are separate entities from Berridge Manufacturing Company



BERRIDGE MANUFACTURING COMPANY
www.berridge.com • 210-650-3050 • Fax 210-650-0379

Roofs of Distinction