

**DALLAS PARK
AND
RECREATION
DEPARTMENT
ADMINISTRATIVE
OFFICES**

10031 E. NORTHWEST HWY
DALLAS, TX 75238

LANDSCAPE

KEVIN SLOAN STUDIO
2400 EMPIRE CENTRAL, SUITE F
DALLAS, TX 75226
MATT STUBBS
(214) 459-1784

STRUCTURAL

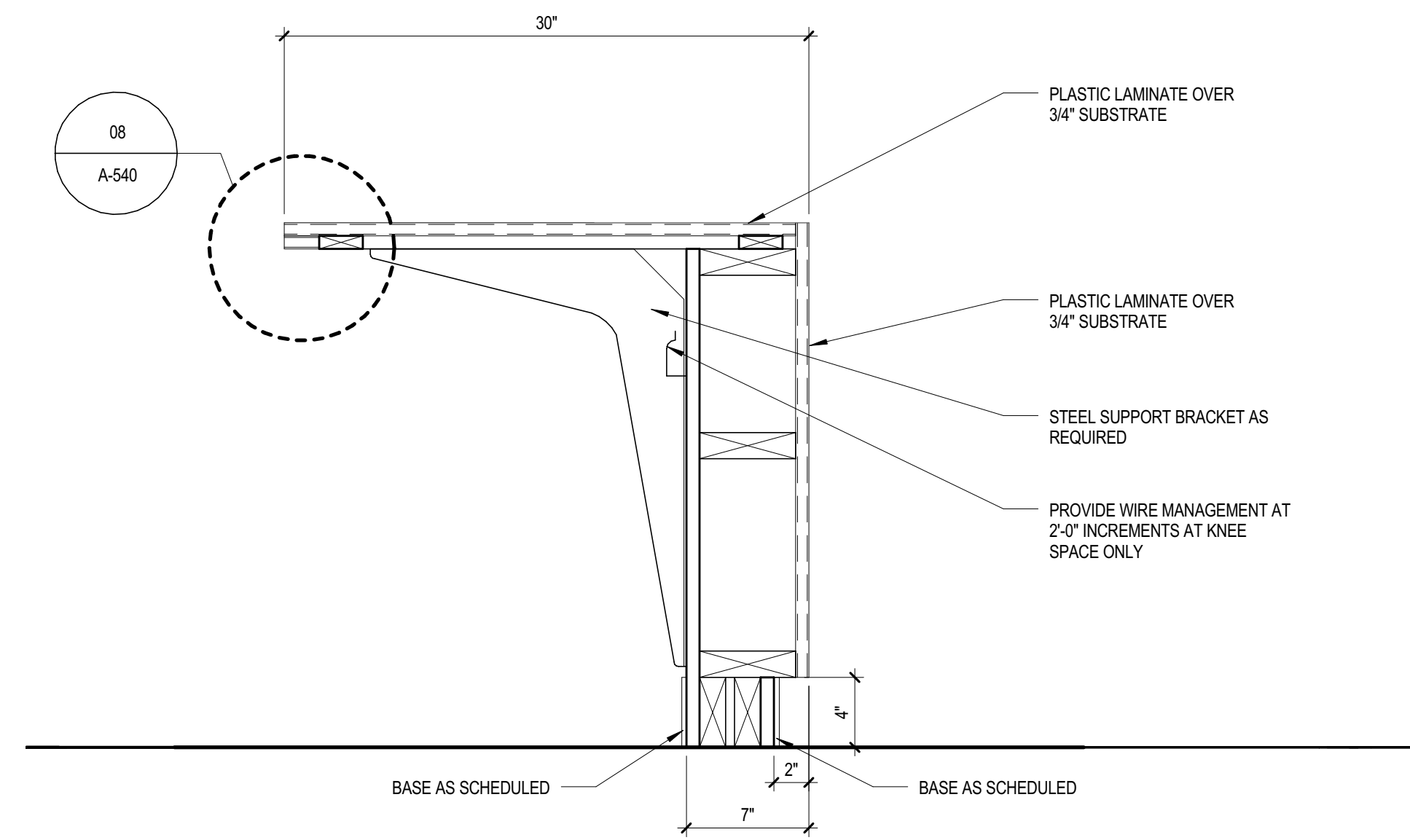
PLG ENGINEERING
5445 La Sierra SUITE 300
DALLAS, TX 75231
ANDY AAYERS
214.739.8100

MEP

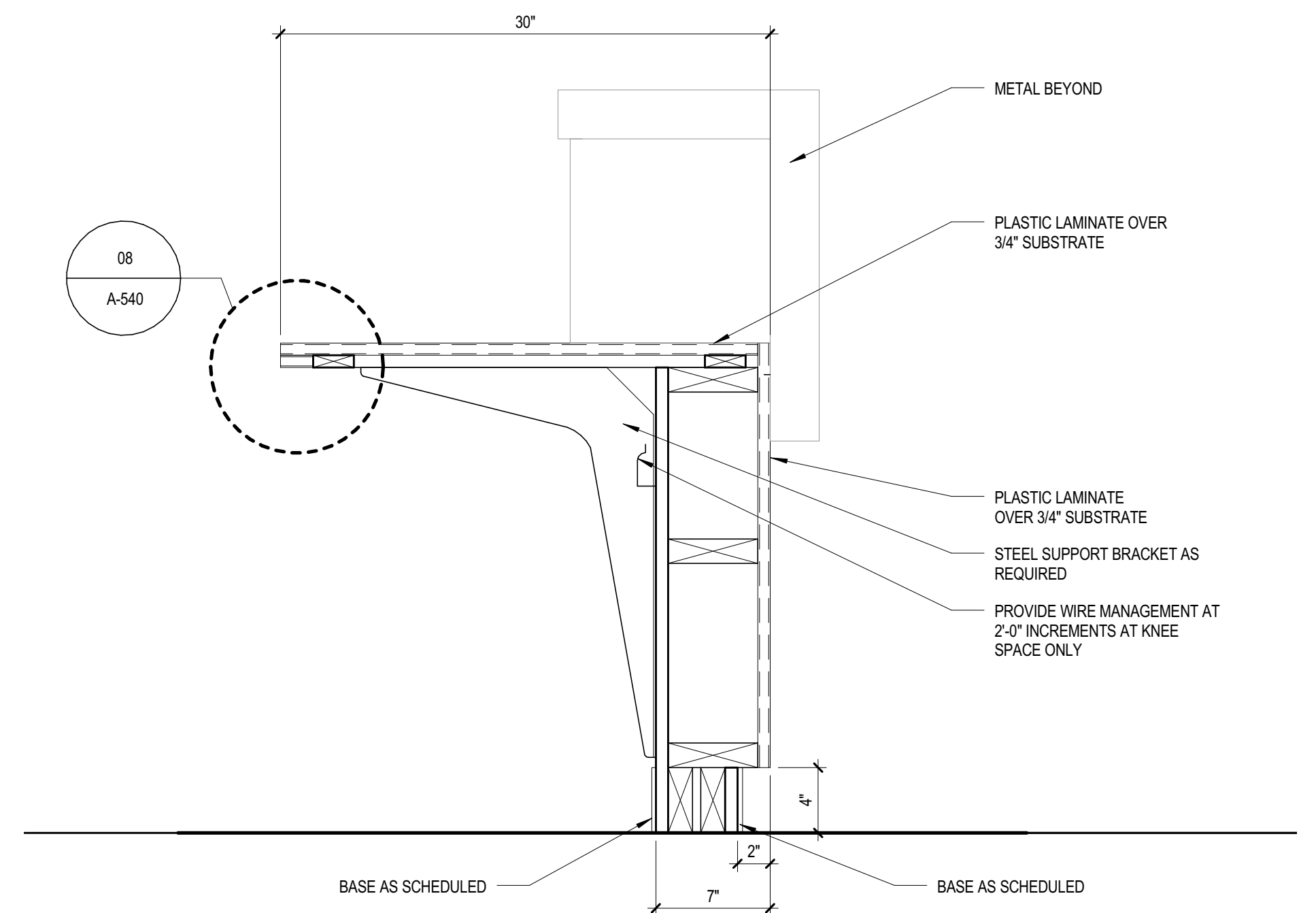
SW ASSOCIATES
5425 LBJ Fwy
SUITE 300 - LB 129
DALLAS, TX 75240
CARL HEWETT
214.397.0211



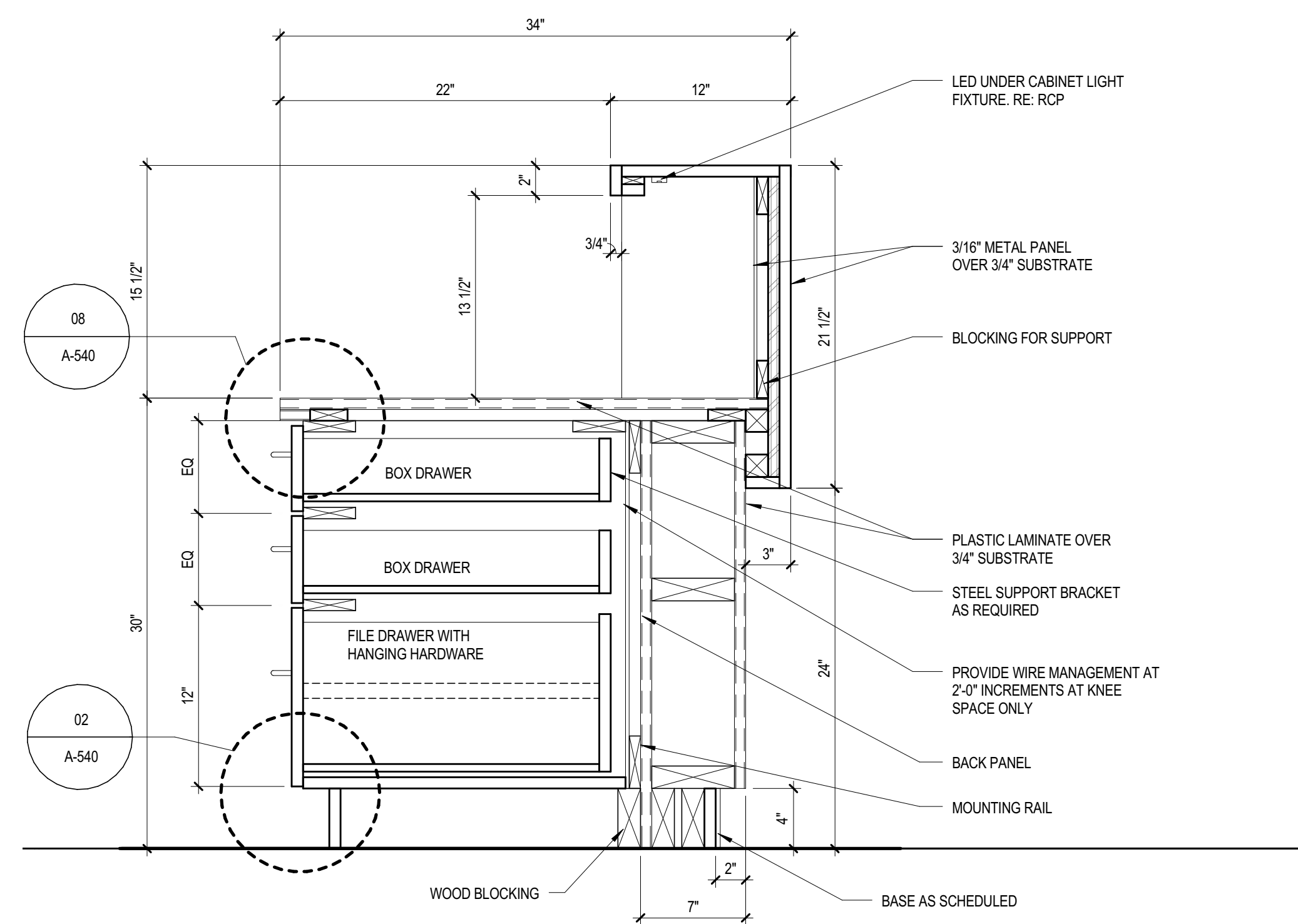
08/25/16
Revisions



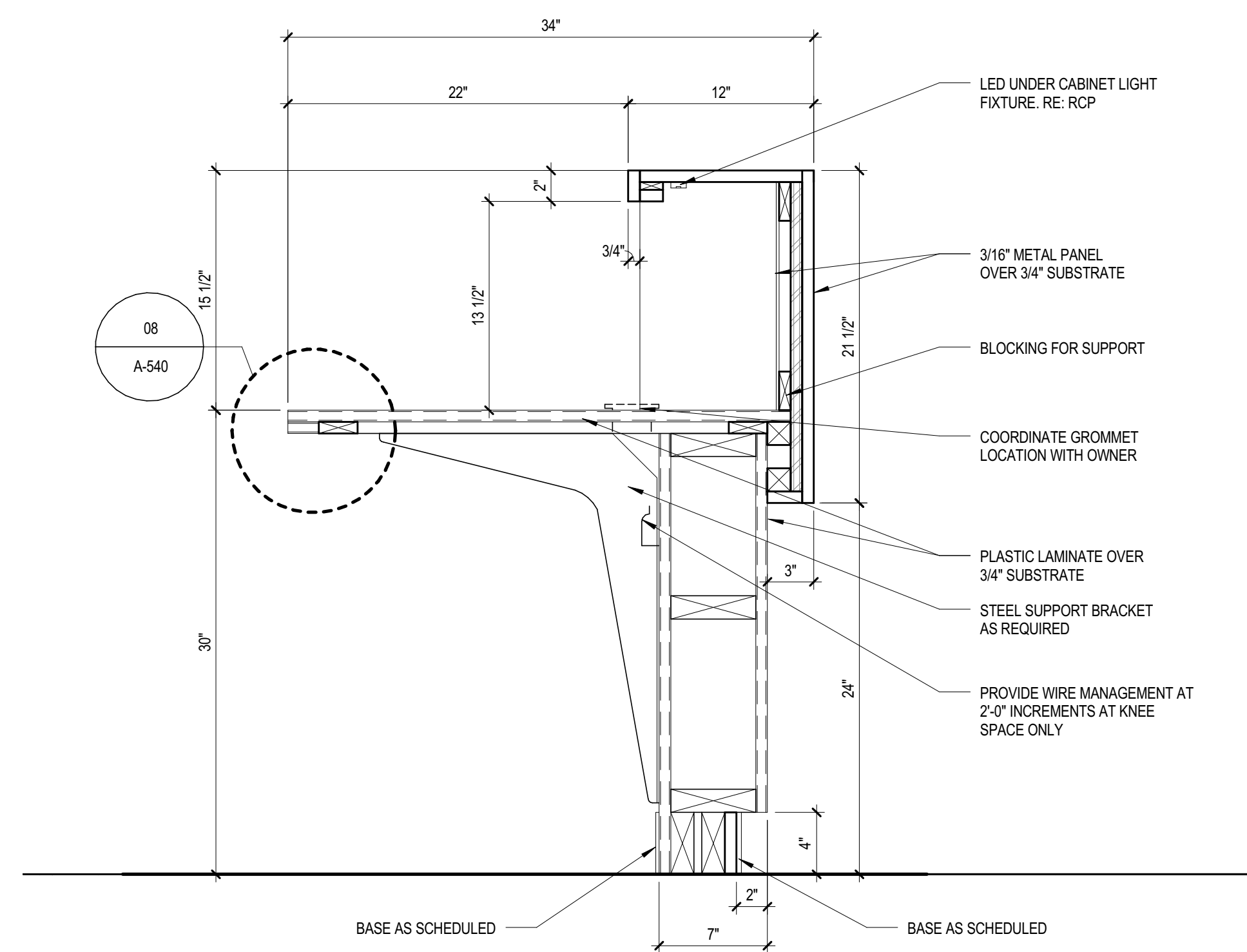
03 RECEPTION DESK @ ADA COUNTERTOP
1 1/2" = 1'-0"



02 RECEPTION DESK @ ADA COUNTERTOP
1 1/2" = 1'-0"



04 RECEPTION DESK @ BASE CABINET
1 1/2" = 1'-0"



01 RECEPTION DESK @ TRANSACTION
1 1/2" = 1'-0"

NO	ISSUE	DATE
Sheet Information		
Date	AUGUST 25, 2016	
Job Number	146054.000	
Drawn	NE	
Checked	TLW	
Approved	PLC	
Title		
ARCHITECTURAL WOODWORK		
Sheet		
A-541		