

ARCHITECTURAL CABINETS GENERAL NOTES

- GENERAL:**
- ALL SECTION DETAILS ON THIS SHEET MAY NOT APPLY TO THIS PROJECT.
 - ARCHITECTURAL WOODWORK TARGETING:
 - TARGETS, WIDTH AND HEIGHT ARE INDICATED ON THE INTERIOR ELEVATIONS IN THE A-52 SERIES DRAWINGS.
 - VERIFY AND COORDINATE CLEAR DIMENSIONS REQUIRED FOR OWNER-FURNISHED EQUIPMENT LOCATED WITHIN OR ADJACENT TO ANY CABINETS.
 - COORDINATE INSTALLATION OF SINKS WITH ASSOCIATED PIPING AND FITTINGS PLUS WITH INSTALLATION OF ACCESSIBLE COVER PANELS.
 - REQUIRED SCRIBES AND FILLER PIECES SHALL BE INSTALLED TO ALLOW PROPER OPERATION OF DRAWERS/DOORS. THEY SHALL BE EVENLY DISTRIBUTED AND OF EQUAL WIDTH ALONG A SINGLE RUN OF CABINETS. THEY SHALL BE 3" WIDE, MAXIMUM EXCEPT INSIDE CORNER FILLERS SHALL BE 2 1/2" WIDE, MINIMUM. REF 04A-540 INSIDE CORNER DETAIL.
 - WHERE BASE CABINETS INTERSECT AT INSIDE CORNER CONDITIONS PROVIDE WALL MOUNTED LEDGERS TO SUPPORT COUNTERTOP AT CORNERS. WHERE UPPER CABINETS INTERSECT AT INSIDE CORNER CONDITIONS PROVIDE HORIZONTAL FILLER PANEL FLUSH WITH BOTTOM OF CABINETS.
 - PROVIDE PLASTIC SCREEN COVERS TO CONCEAL SCREW HEADS AT ALL SEMI-EXPOSED CABINET SURFACES. ALL EXPOSED SCREWS SHALL BE COUNTERSUNK.
 - CORE MATERIAL FOR SHELVING GREATER THAN 30" WIDE SHALL BE 1" THICK.
 - REFERENCE A-500 FOR TOILET ACCESSORY LEGEND AND MOUNTING HEIGHTS.
 - ALL VERTICAL JOINTS BETWEEN CABINETS SHALL BE BUTT JOINTS. THEY SHALL LOCK "SEAMLESS" AND COVERED IN PLASTIC LAMINATE.
- COUNTERTOP:**
- ALL COUNTERTOPS 25 1/2" DEEP UNO ON INTERIOR ELEVATIONS.
 - ALL OUTSIDE COUNTERTOP CORNERS TO BE 1 1/2" RADIUS (IN PLAN) UNO REF 01A-540 COUNTERTOP CORNER DETAIL.
 - PROVIDE WALL MOUNTED BRACKETS FOR SUPPORT OF COUNTERTOPS AT KNEE SPACES. COUNTERTOPS SHALL BE SUPPORTED 30" MINIMUM - 30" MAXIMUM OC COORDINATE LOCATION WITH KEYBOARD TRAYS AND CPU HOLDERS. REF INTERIOR ELEVATIONS FOR LOCATIONS.
 - LOCATE GROMMETS AT BACK OF COUNTERTOPS (OVER KNEE SPACE, ONLY) EVERY 36" OC WITH A MINIMUM OF 1 PER KNEE SPACE UNO ON THE EQUIPMENT PLAN. COORDINATE FINAL GROMMET LOCATIONS WITH OWNER. EXCEPT DO NOT PROVIDE GROMMETS AT ACCESSIBLE PORTION OF COUNTERTOP. AS INDICATED ON THE EQUIPMENT PLANS.
 - REFER TO INTERIOR FINISH PLAN FOR COUNTERTOP MATERIAL. ALL COUNTERTOPS AT SINKS TO BE SOLID SURFACE MATERIAL UNO ON INTERIOR FINISH PLAN. REF 06A-540 SOLID SURFACE MATERIAL COUNTERTOP EDGE DETAIL AND 06A-540 FOR PLASTIC LAMINATE COUNTERTOP EDGE DETAIL.
 - ALL BACK AND SIDE SPLASHES SHALL BE 4" TALL X 3/4" THICK IF PLASTIC LAMINATE, 1/2" THICK IF SOLID SURFACE MATERIAL UNO ON THE INTERIOR ELEVATIONS. ALL SPLASHES SHALL BE SCRIBED TO CONFORM TO THE SURFACE OF ABUTTING WALLS. ALL SPLASHES SHALL BE SEALED TO THE WALL WITH CLEAR SILICONE SEALANT. PROVIDE SPLASHES ON ALL REAR AND SIDE WALLS AT BASE CABINETS.
- BASE CABINETS:**
- PROVIDE SCHEDULED BASE ALONG BOTTOM OF EXPOSED FRONTS, BACKS, SIDES, AND ENDS OF ALL FIXED CABINETS, PEDESTALS, VERTICAL SUPPORT PANELS, KNEE SPACES, ETC. UNO ON THE INTERIOR ELEVATIONS.
 - ALL DRAWER LENGTHS SHALL BE 20". UNO ALL DRAWERS GREATER THAN 30" WIDE SHALL HAVE 2 PULLS.
 - ALL HORIZONTAL AND VERTICAL JOINT SHALL BE 1/8" MAX.
 - ALL TOE KICK SPACES SHALL BE 4 1/8" TALL X 3 1/4" DEEP, UNO. REF 02A-540.
 - PROVIDE 1 1/2" THICK END PANEL AT KNEE SPACES, UNDER COUNTER APPLIANCE OPENINGS AND ACCESSIBLE LAV/SINKS THAT DO NOT ABUT A WALL OR OTHER CABINETS. REF 03A-540 FINISHED END PANEL DETAIL.
- UPPER CABINETS:**
- TOP OF UPPER AND FULL HEIGHT CABINETS SHALL BE 7'-2" AFF UNO ON INTERIOR ELEVATIONS. REF A-52 SERIES DRAWINGS.
 - REFERENCE SERIES A-6 (REFLECTED CEILING PLANS) FOR FURR DOWN LOCATIONS. WALL CABINETS WITHOUT A FURR DOWN ABOVE SHALL RECEIVE A CONTINUOUS 8" HIGH SLOPED PANEL, FINISHED TO MATCH CABINETS. REF E1A-540.
 - WALL MOUNTED UPPER CABINETS SHALL INCLUDE ADJUSTABLE SHELF (SHELVES) UNO
- | CABINET HEIGHT | NUMBER OF SHELVES |
|-----------------|-------------------|
| THROUGH 24" | 1 |
| 25" THROUGH 42" | 2 |
| 43" THROUGH 48" | 3 |
- TOPS AND BOTTOMS OF WALL HUNG CABINETS SHALL BE 3/4" THICK WITH PLASTIC LAMINATE ON EXPOSED SURFACES.
 - BACKS OF WALL HUNG CABINETS SHALL BE 1/4" THICK UNO. BACKS OF BASE CABINETS SHALL BE 1/4" THICK UNO.

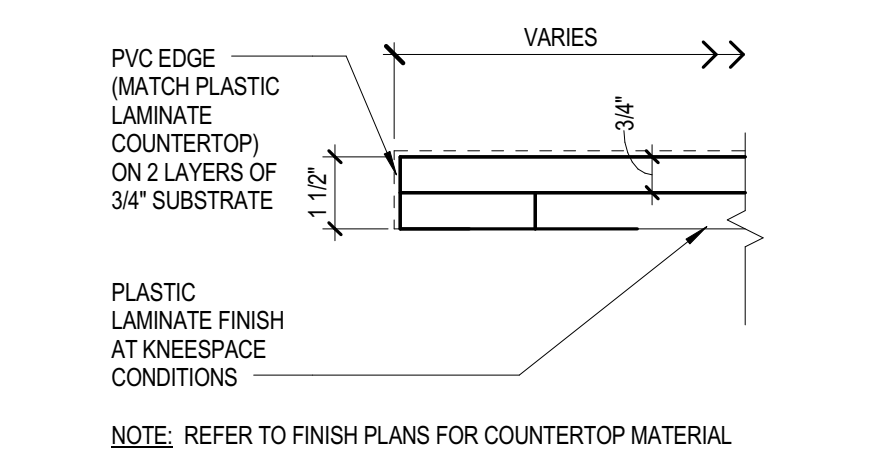


Revisions

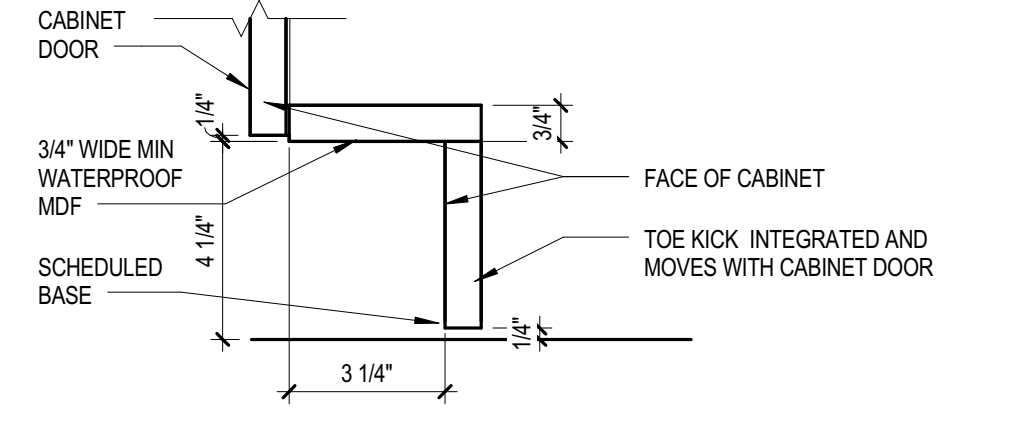
NO.	ISSUE	DATE
Sheet Information		
Date	AUGUST 25, 2016	
Job Number	146054.000	
Drawn	Author	
Checked	Checker	
Approved	Approver	

TYPICAL ARCHITECTURAL WOODWORK SECTIONS

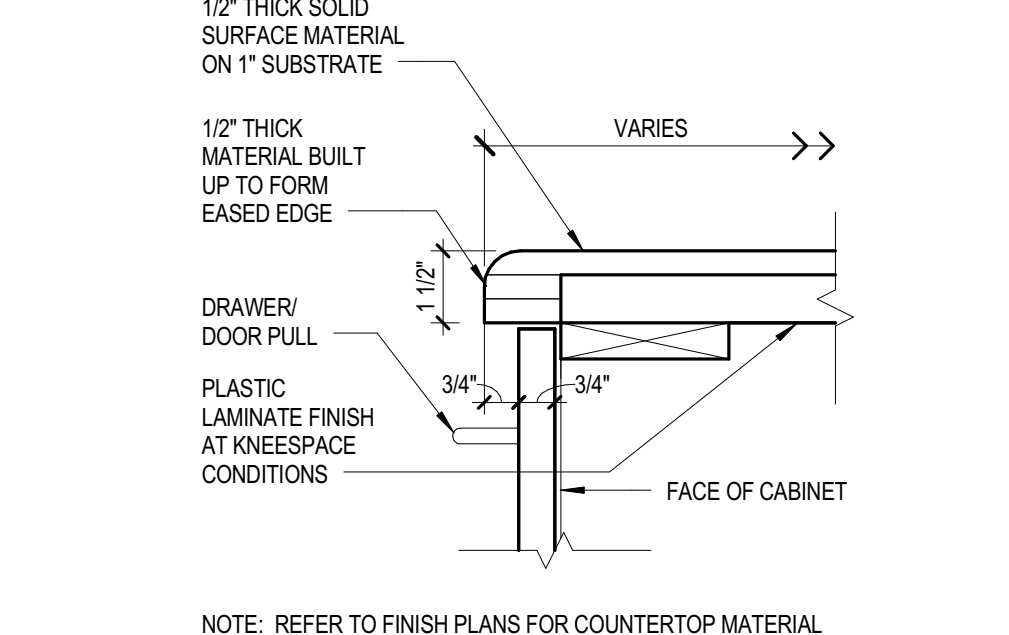
Sheet
A-540



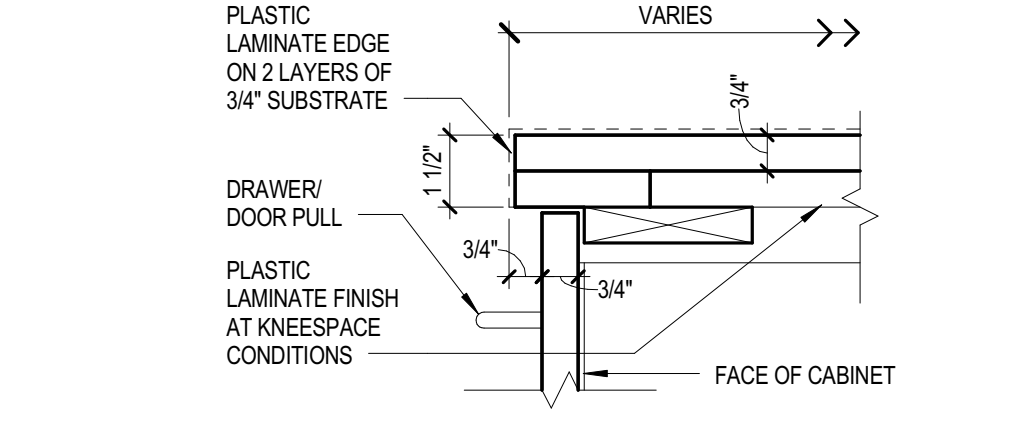
08 PLASTIC LAMINATE W/PVC EDGE
3" = 1'-0"



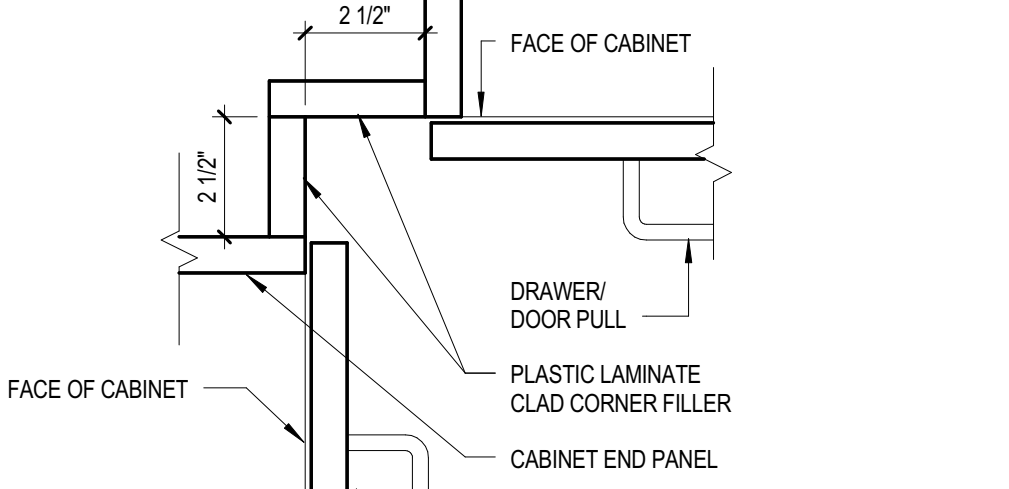
07 INTEGRATED TOE KICK
3" = 1'-0"



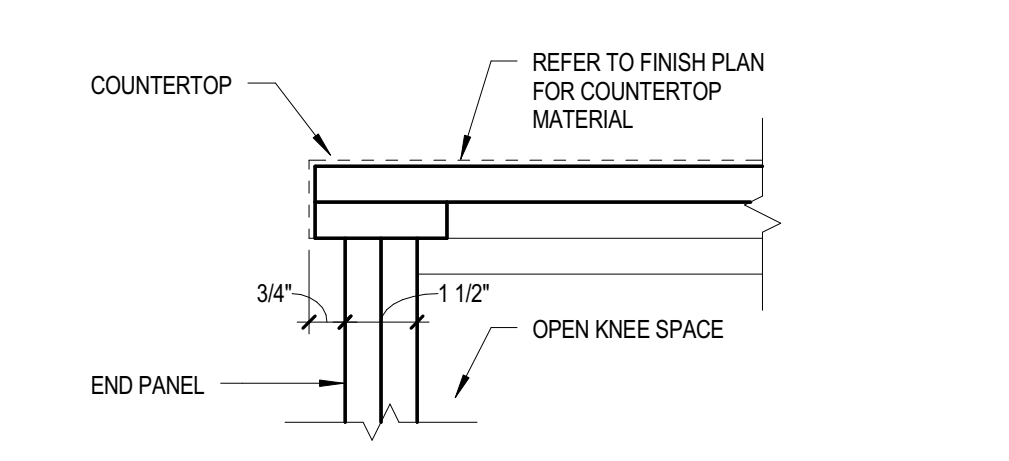
06 SIMULATED STONE
3" = 1'-0"



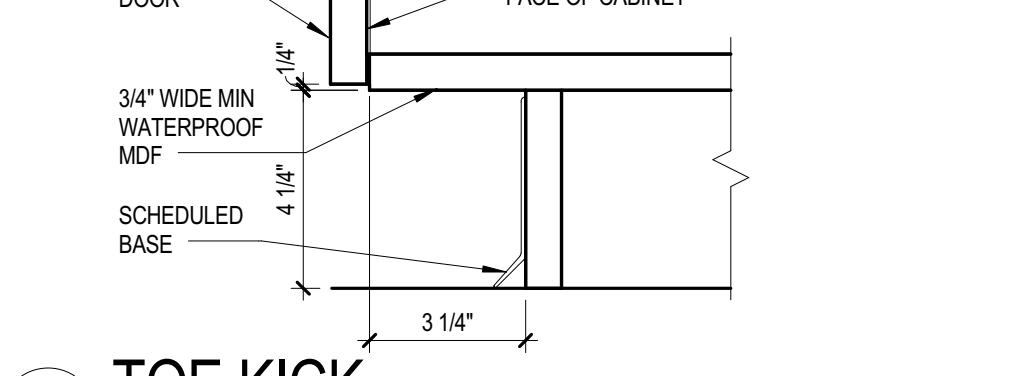
05 PLASTIC LAMINATE
3" = 1'-0"



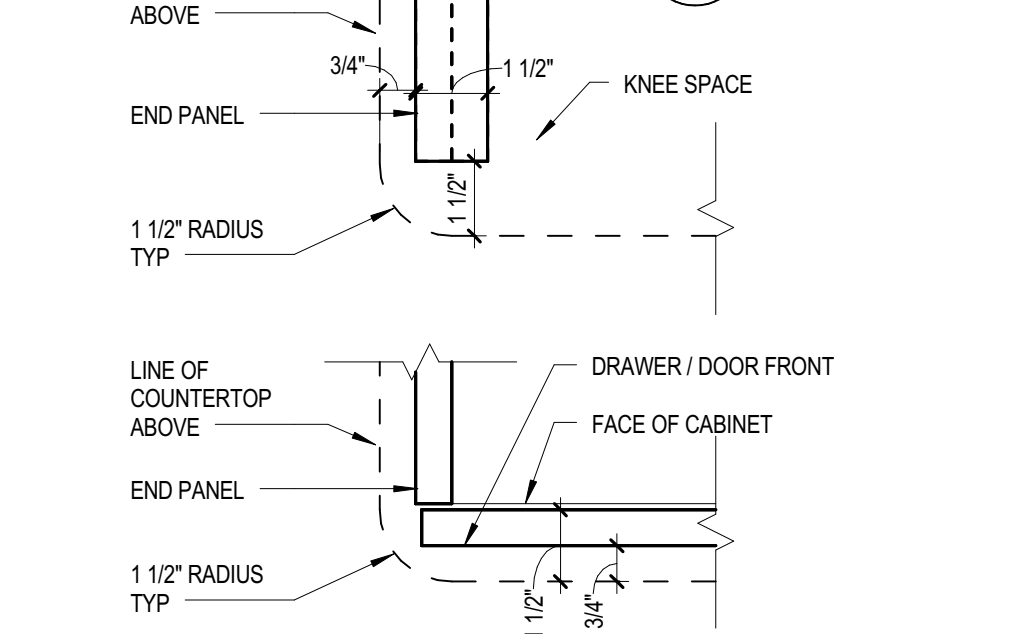
04 INSIDE CORNER
3" = 1'-0"



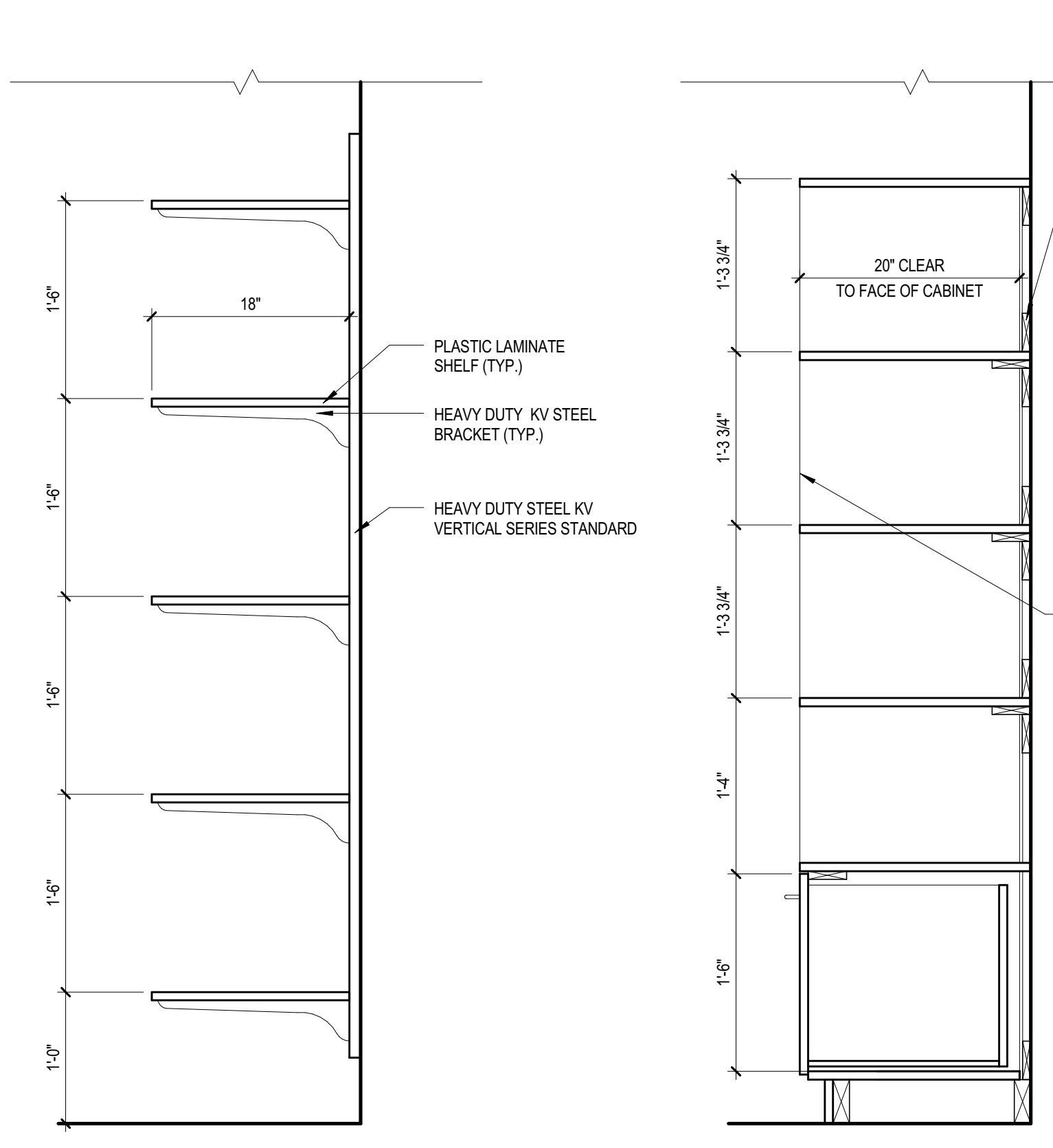
03 FINISHED END PANEL
3" = 1'-0"



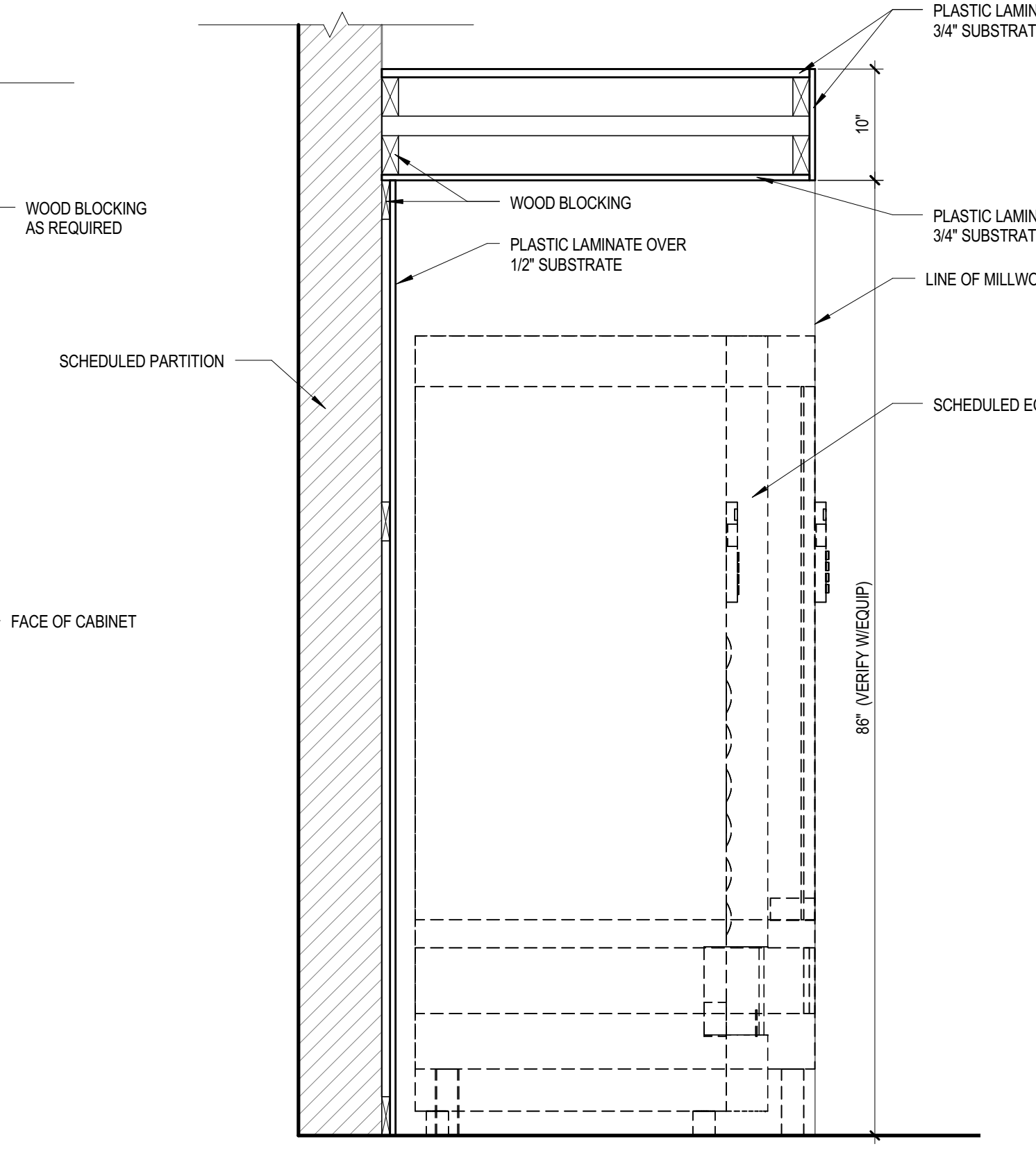
02 TOE KICK
3" = 1'-0"



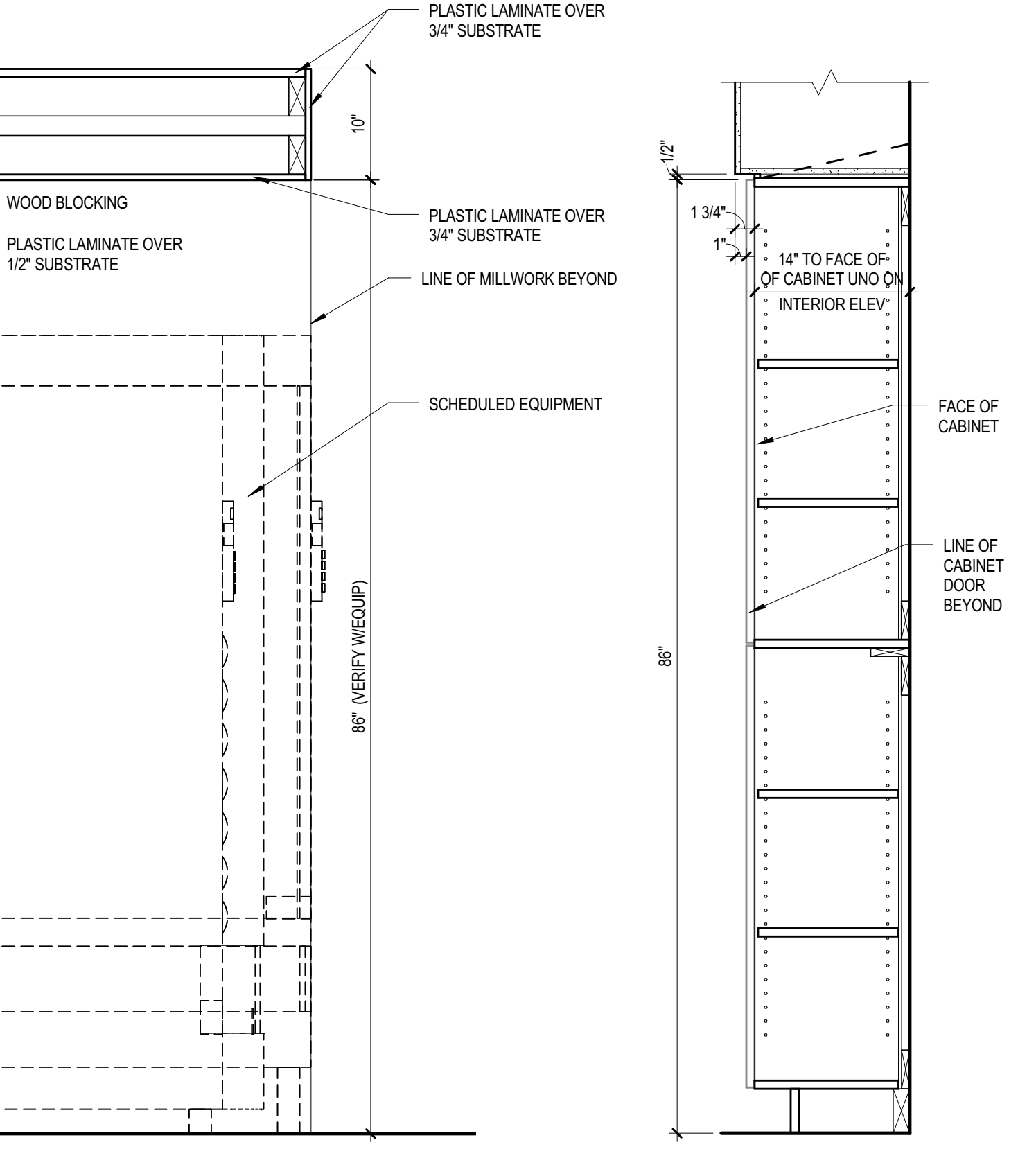
01 COUNTERTOP CORNER
3" = 1'-0"



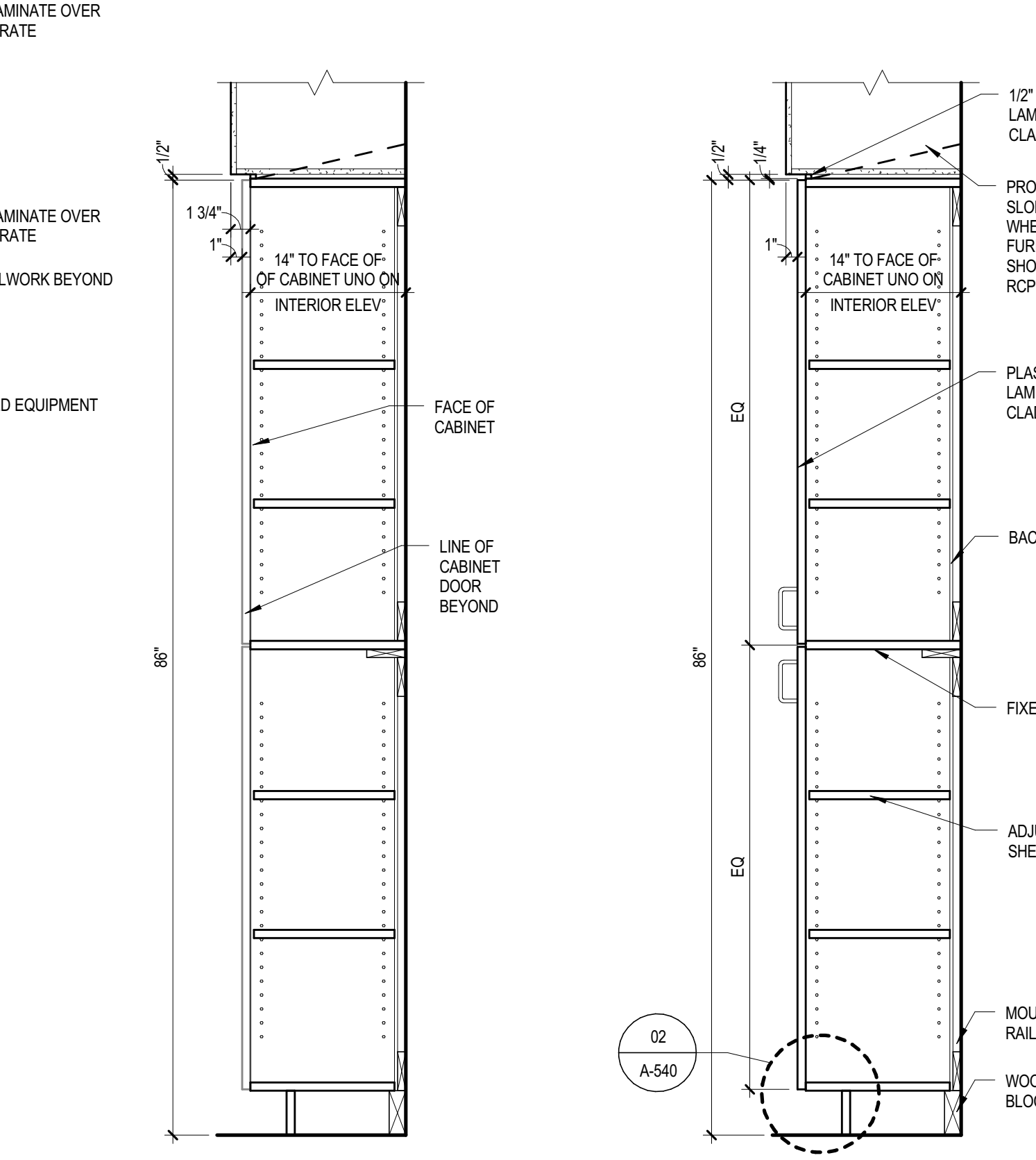
K5 ADJ. SHELF
1" = 1'-0"



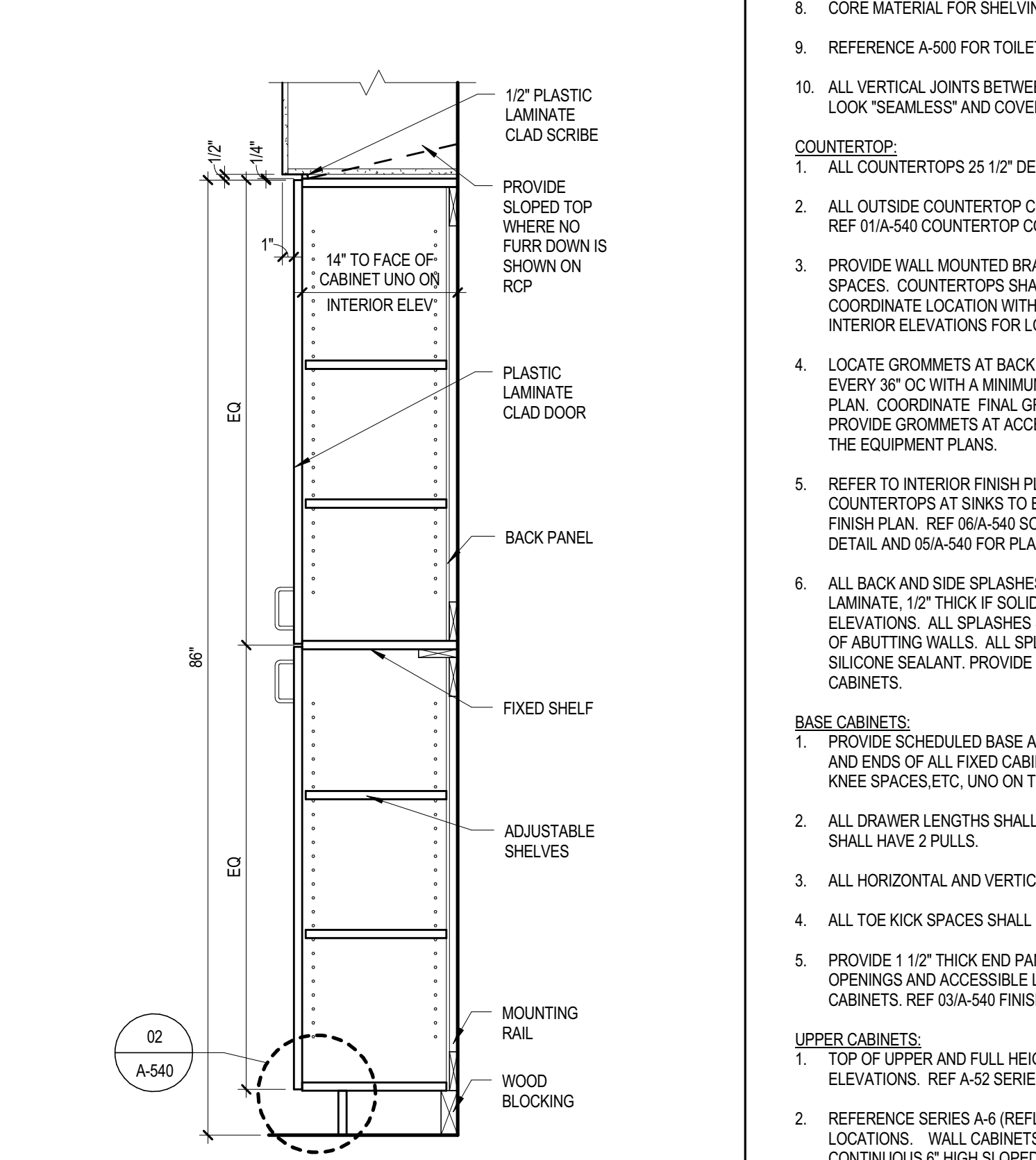
K4 FULL HEIGHT
WITHOUT DOORS
1" = 1'-0"



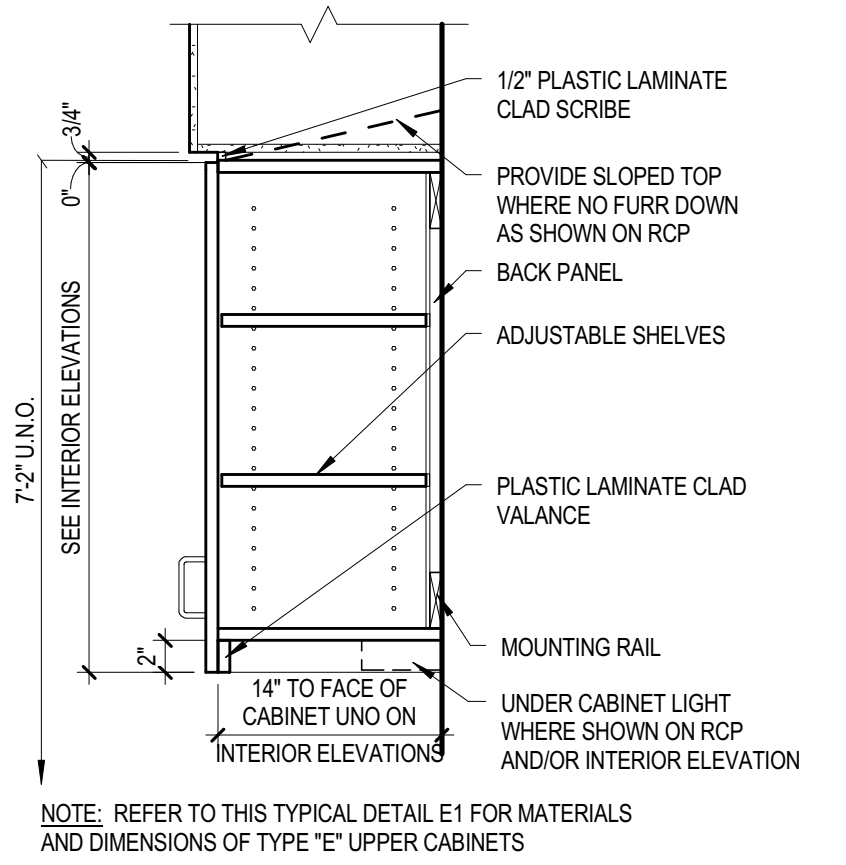
K3 FULL HEIGHT
WITH DOORS
1" = 1'-0"



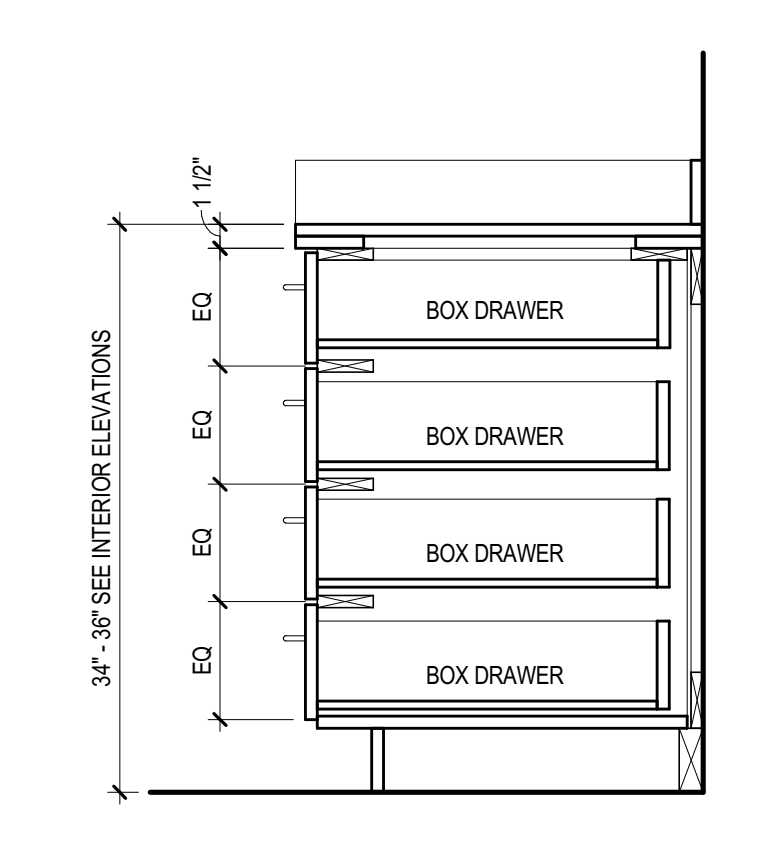
K2 FULL HEIGHT
WITHOUT DOORS
1" = 1'-0"



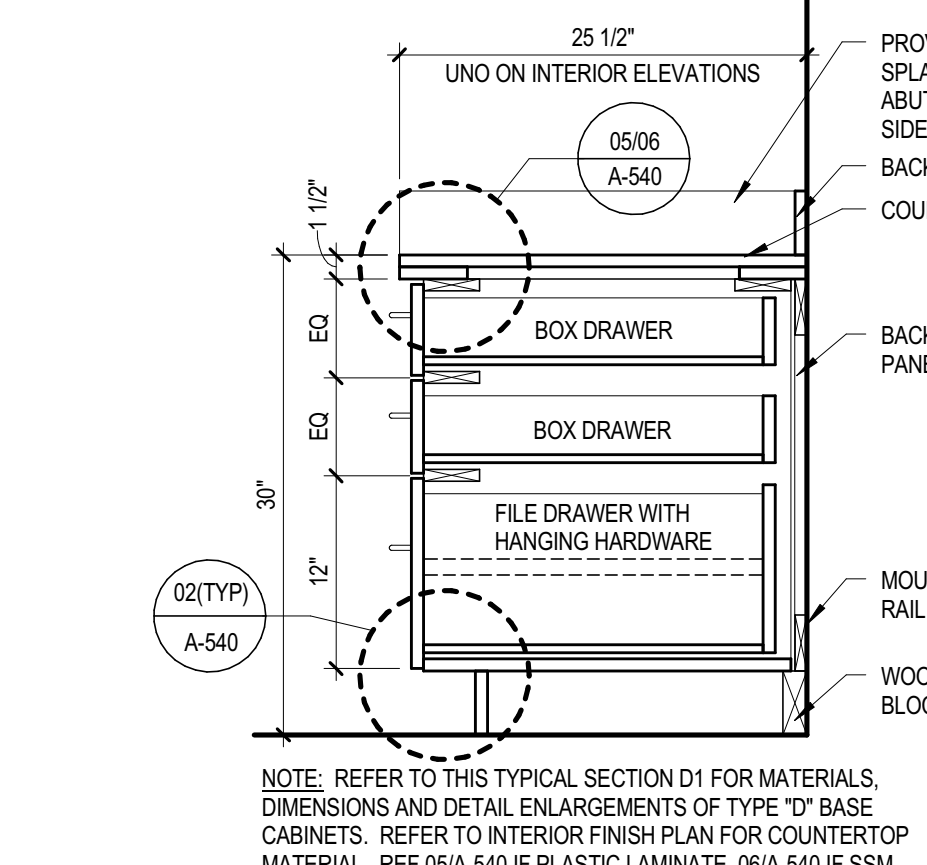
K1 FULL HEIGHT
WITH DOORS
1" = 1'-0"



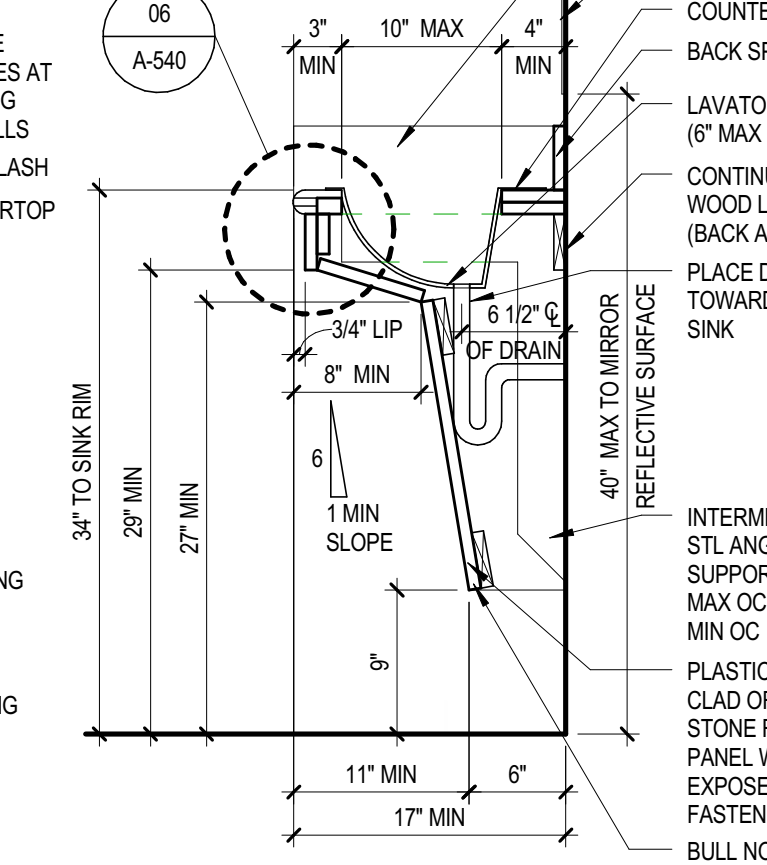
E1 UPPER CABINET
WITH DOORS
1" = 1'-0"



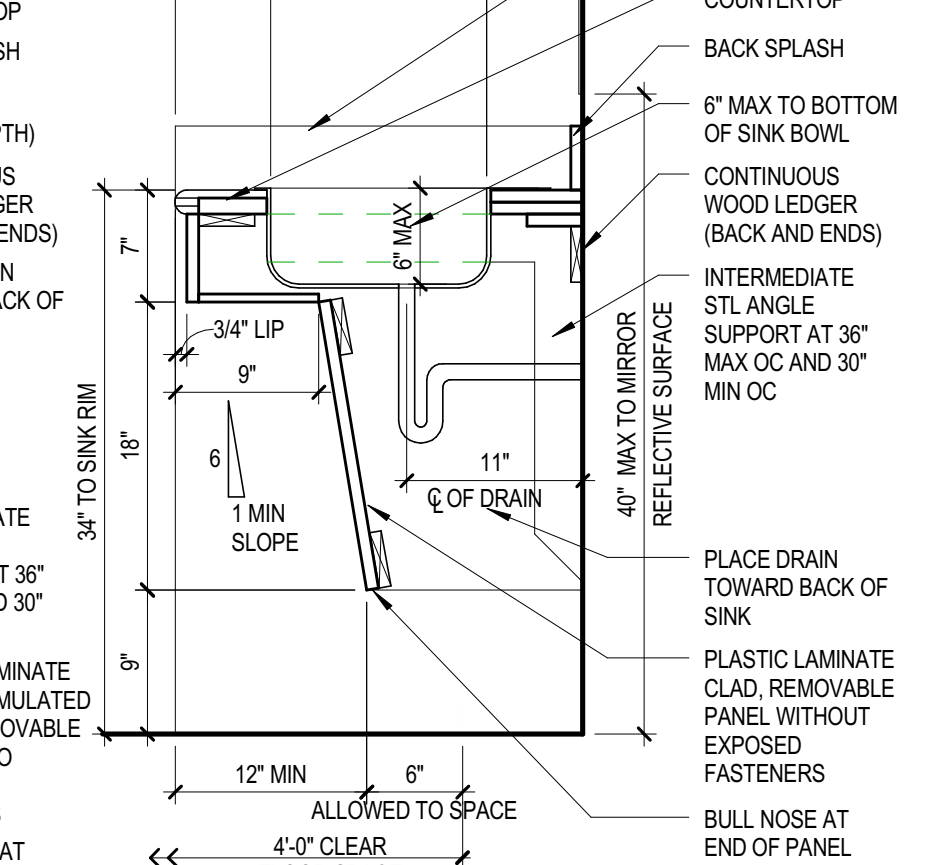
D4 BASE CABINET
4 BOX DRAWERS
1" = 1'-0"



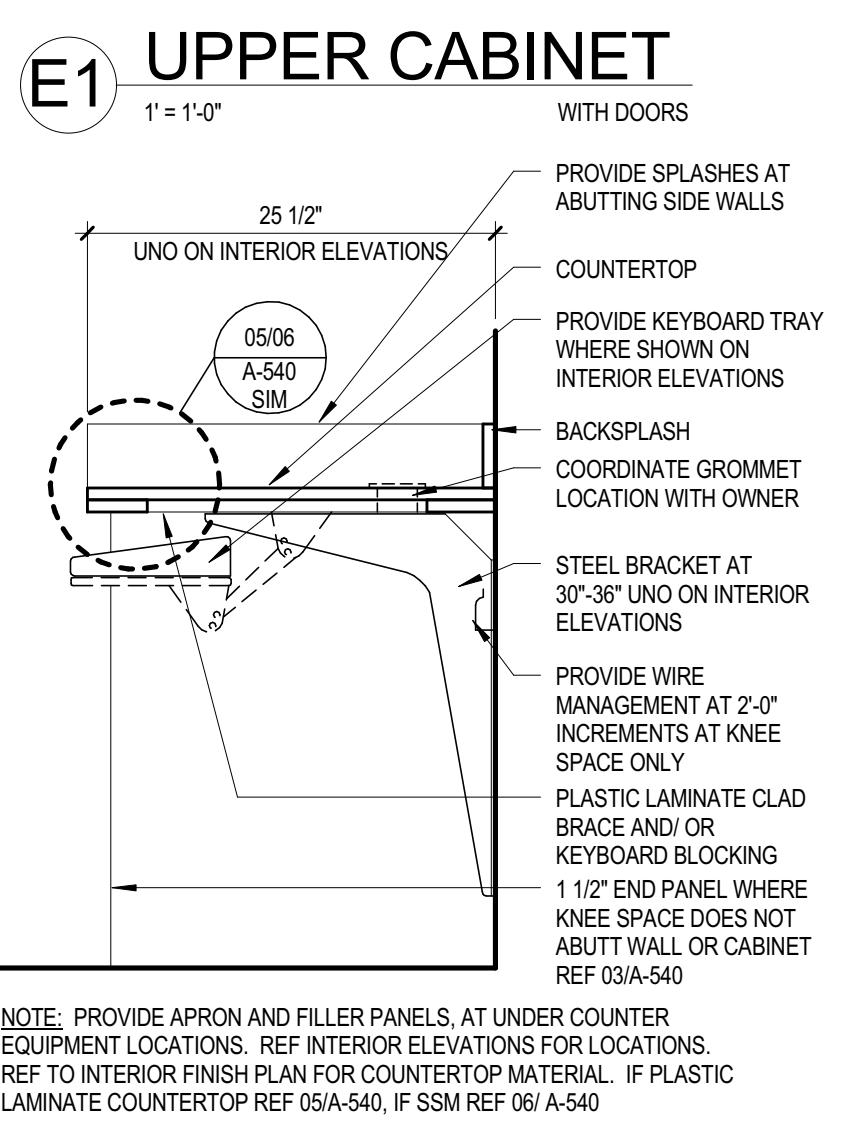
D1 BASE CABINET
2 BOX, 1 FILE DRAWER
1" = 1'-0"



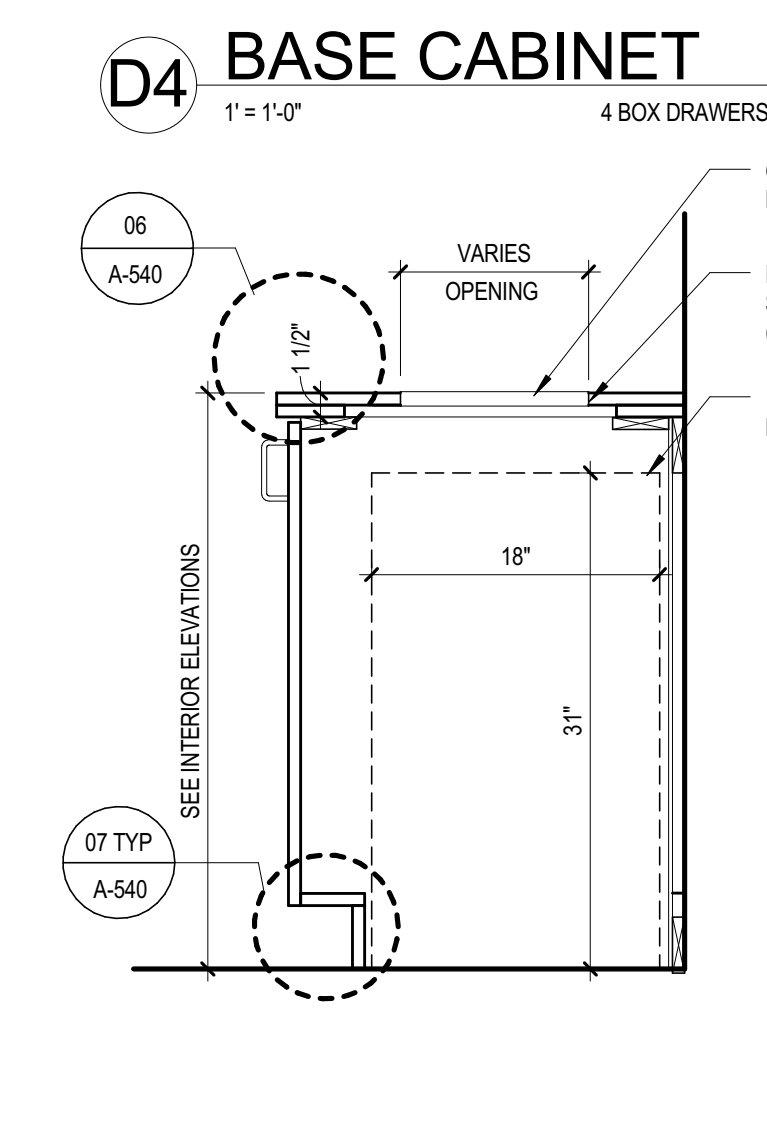
C2 ACCESSIBLE SINK
MIN SIZE VANITY WITH INTEGRAL BOWL
1" = 1'-0"



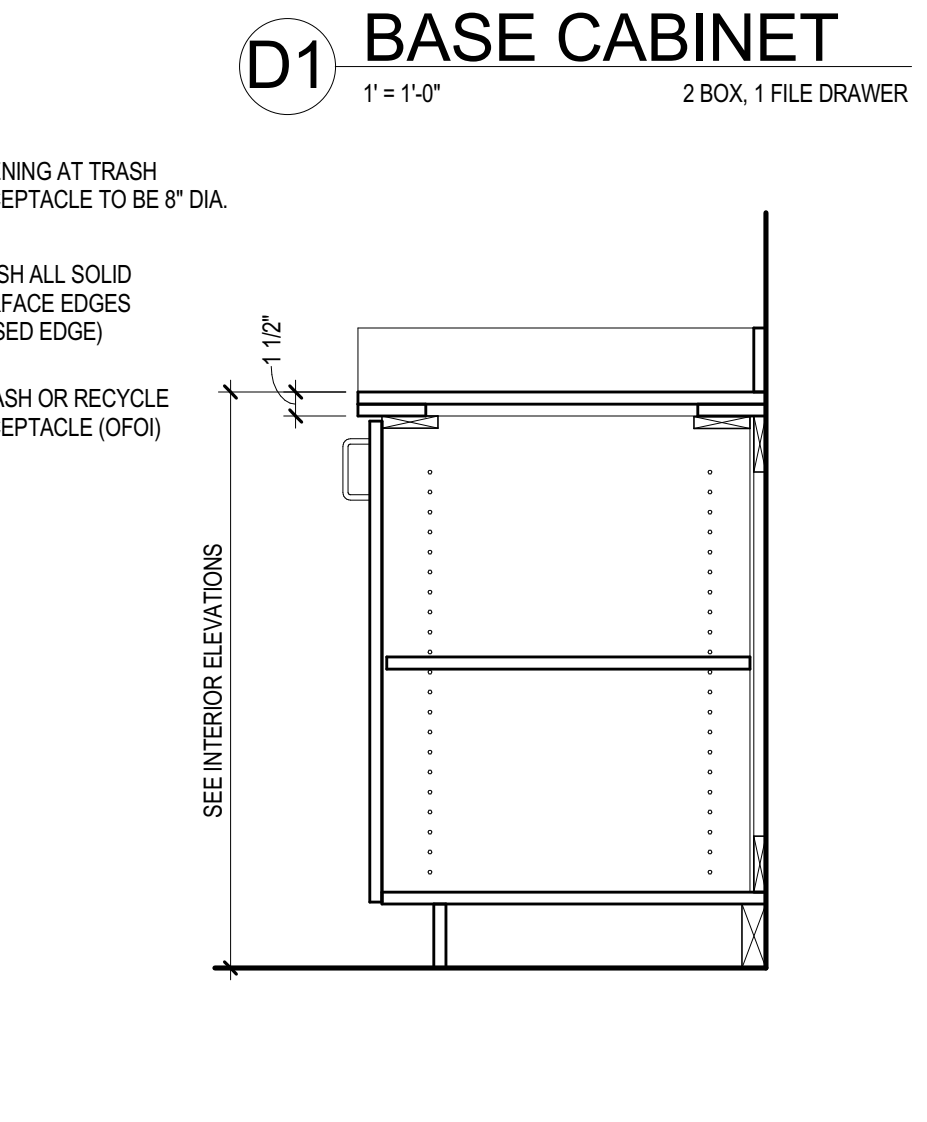
C1 ACCESSIBLE LAV
MINIMUM SIZE VANITY WITH INTEGRAL BOWL
1" = 1'-0"



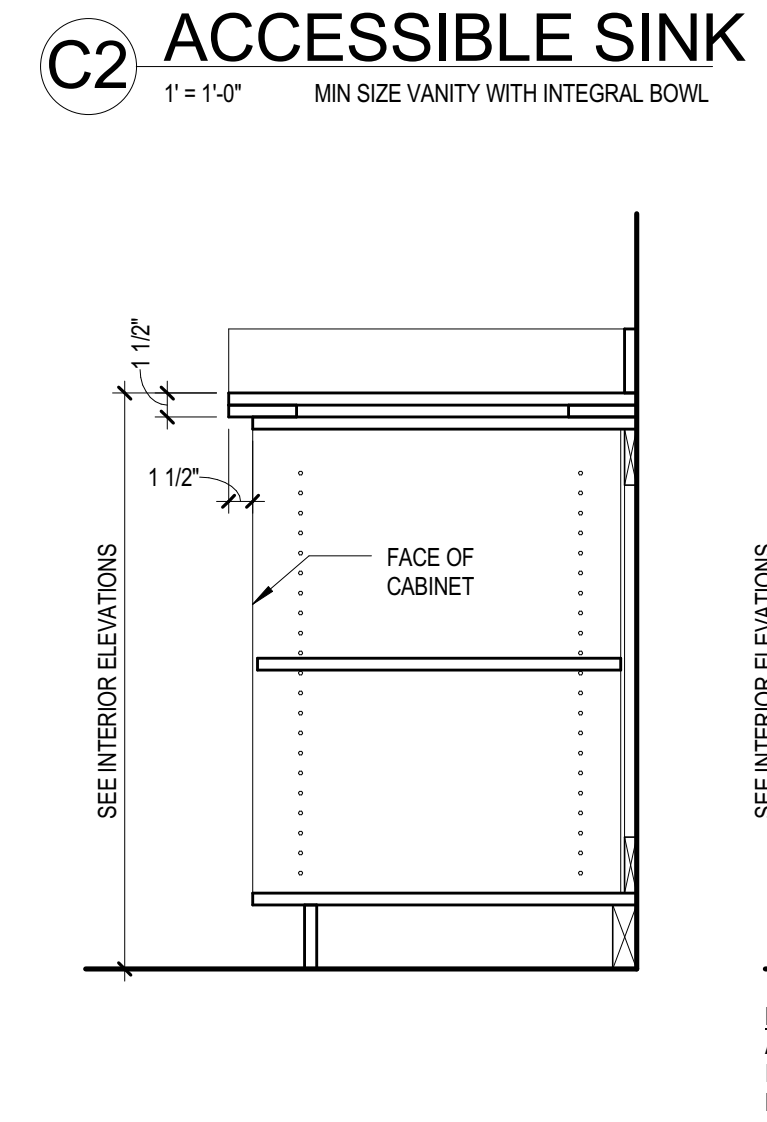
B1 COUNTERTOP
KNEE SPACE OR IIC EQUIPMENT CONDITION
1" = 1'-0"



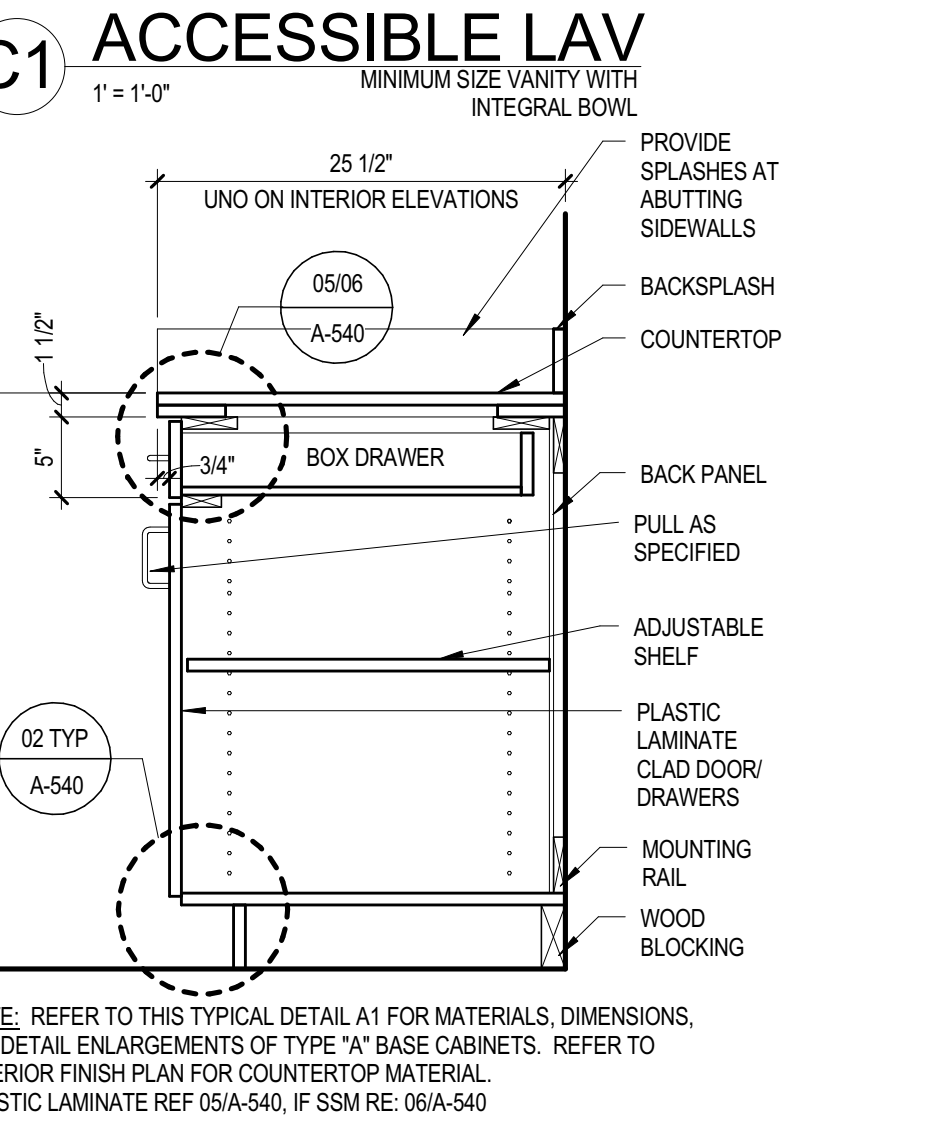
A4 BASE CABINET
AT TRASH
1" = 1'-0"



A3 BASE CABINET
WITH DOOR
1" = 1'-0"



A2 BASE CABINET
WITHOUT DOOR
1" = 1'-0"



A1 BASE CABINET
W/ DOOR & 1 DRAWER
1" = 1'-0"

8/25/2016 9:26:40 AM \\perkinswill.net\Projects\Dallas\146054.000_LE_Muchert_SA\DESIGN\BIM\REV\TYPICAL_JEM_2.rvt