



08/25/16

Revisions

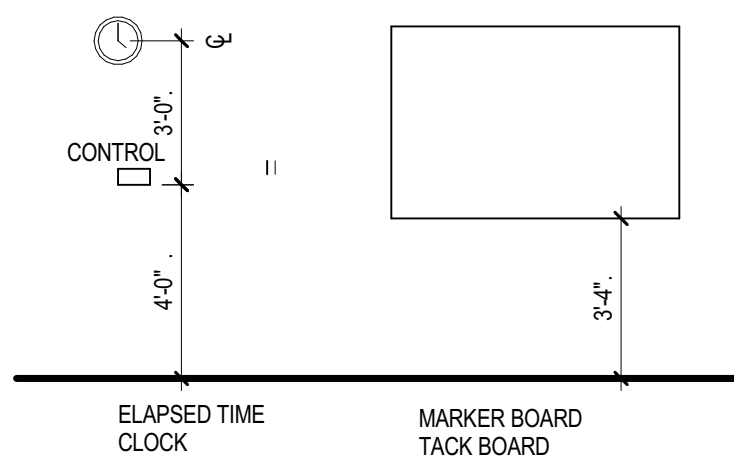
**INTERIOR ELEVATION
GENERAL NOTES**

- SEE ELECTRICAL FOR ELECTRICAL OUTLET, DATA OUTLET AND JUNCTION BOX SPECIFICATIONS. OUTLETS ARE SHOWN HERE FOR PLACEMENT COORDINATION ONLY.
- REFER TO DOOR SCHEDULE FOR ALL DOORS SHOWN.
- REFER TO WINDOW SCHEDULE FOR ALL STOREFRONT SHOWN.

**INTERIOR ELEVATION
LEGEND**

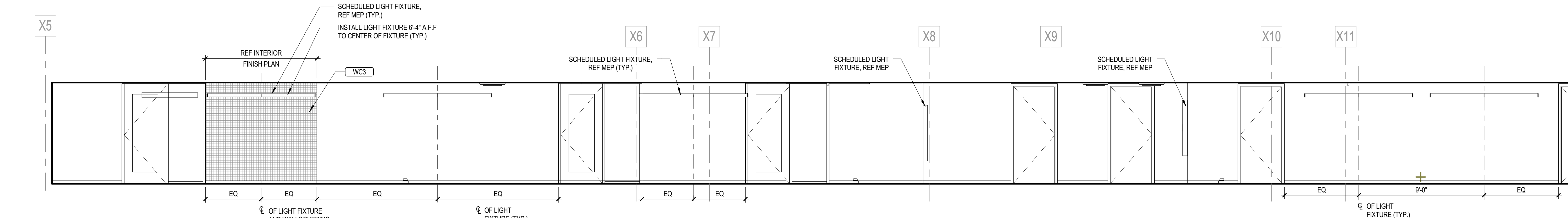
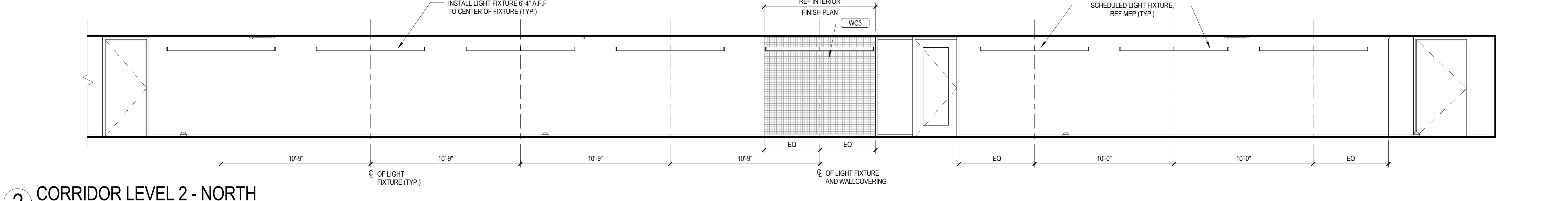
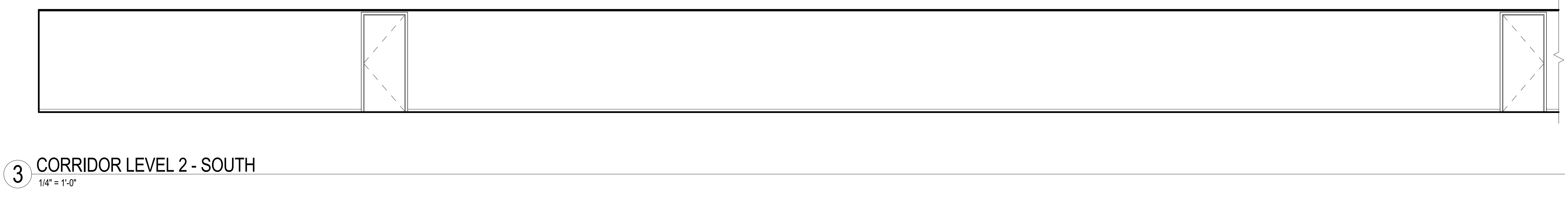
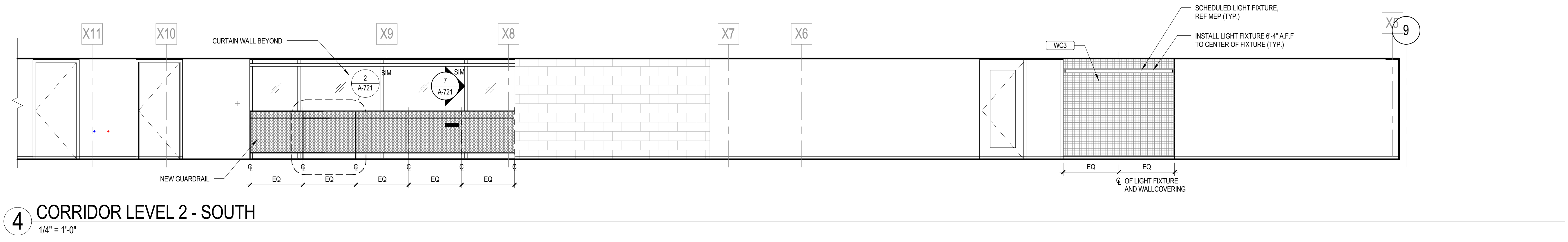
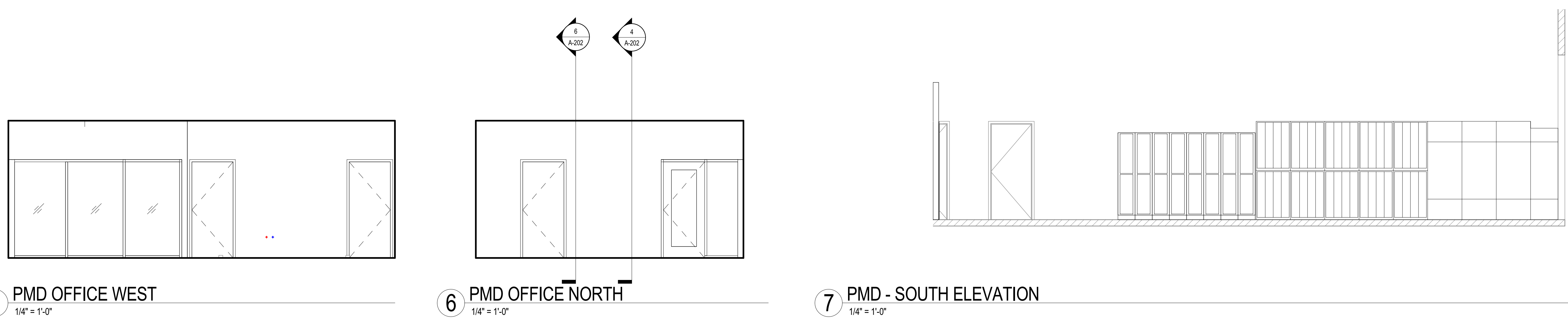
- TAT1 TOILET ACCESSORY. REFER TO A-500 FOR LEGEND.
 - - - OWNER FURNISHED ITEM/ EQUIPMENT
 - CONTRACTOR FURNISHED ITEM/ EQUIPMENT
- CABINET WIDTH $\frac{24"}{NT}$
CABINET TYPE (REF A-54 SERIES FOR DESCRIPTIONS)

**MISCELLANEOUS
EQUIPMENT
MOUNTING HEIGHTS**



**INTERIOR ELEVATION
NOTES BY NUMBER**

- ① PERSONAL COMPUTER (PC)
- ② PRINTER (P)
- ③ COMPUTER KEYBOARD (K)
- ④
- ⑤



NO	ISSUE	DATE
Sheet Information		
Date	AUGUST 25, 2016	
Job Number	146054.000	
Drawn	NE	
Checked	TW	
Approved	RGV	
Title		
INTERIOR ELEVATIONS		
Sheet		
A-523		