

**DALLAS PARK
AND
RECREATION
DEPARTMENT
ADMINISTRATIVE
OFFICES**

10031 E. NORTHWEST HWY
DALLAS, TX 75238

LANDSCAPE

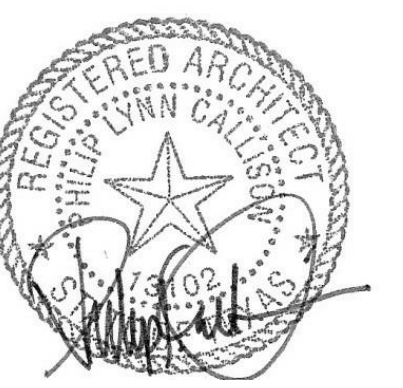
KEVIN SLOAN STUDIO
2400 EMPIRE CENTRAL, SUITE F
DALLAS, TX 75226
MATT STUBBS
(214) 459-1784

STRUCTURAL

PLG ENGINEERING
5445 La Sierra SUITE 300
DALLAS, TX 75231
ANDY AAYERS
214.739.8100

MEP

SW ASSOCIATES
5425 LBJ FWY
SUITE 300 - LB 120
DALLAS, TX 75240
CARL HEWETT
214.397.0211



08/25/16

Revisions

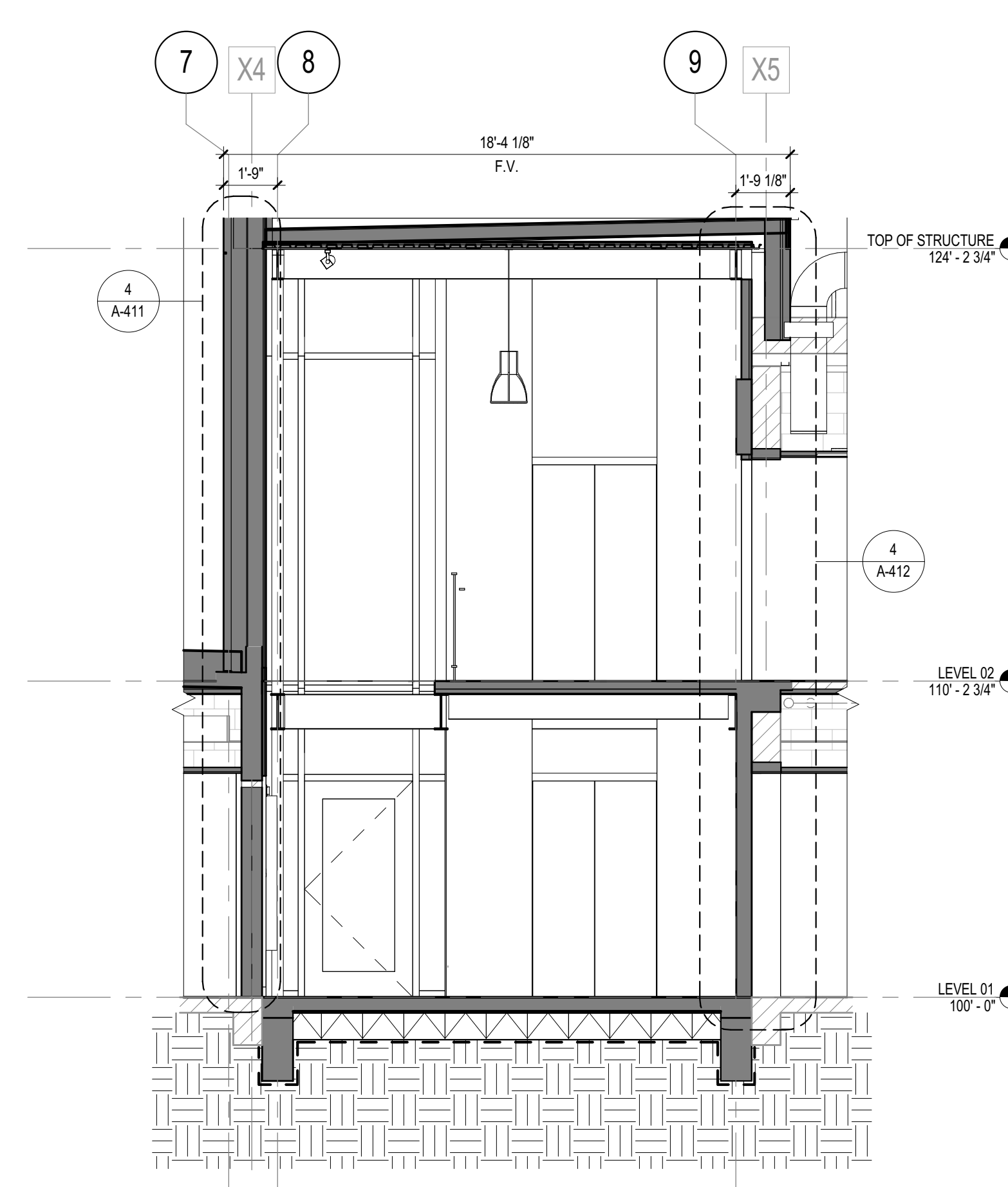
NO	ISSUE	DATE
Sheet Information		
Date	AUGUST 25, 2016	
Job Number	146054.000	
Drawn	VBW	
Checked	PLC	
Approved	PLC	

Title

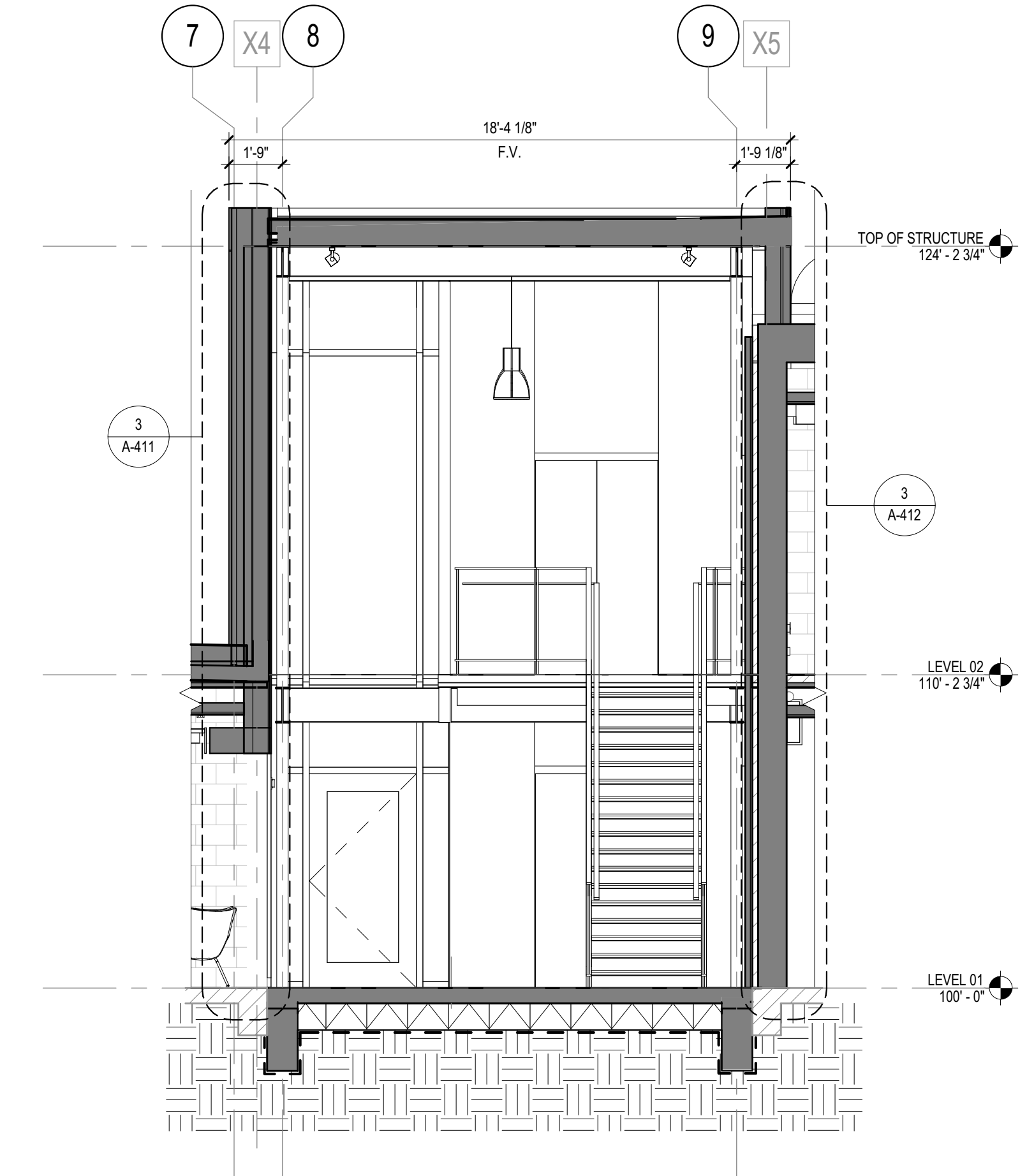
**PARTIAL BUILDING
SECTIONS**

Sheet

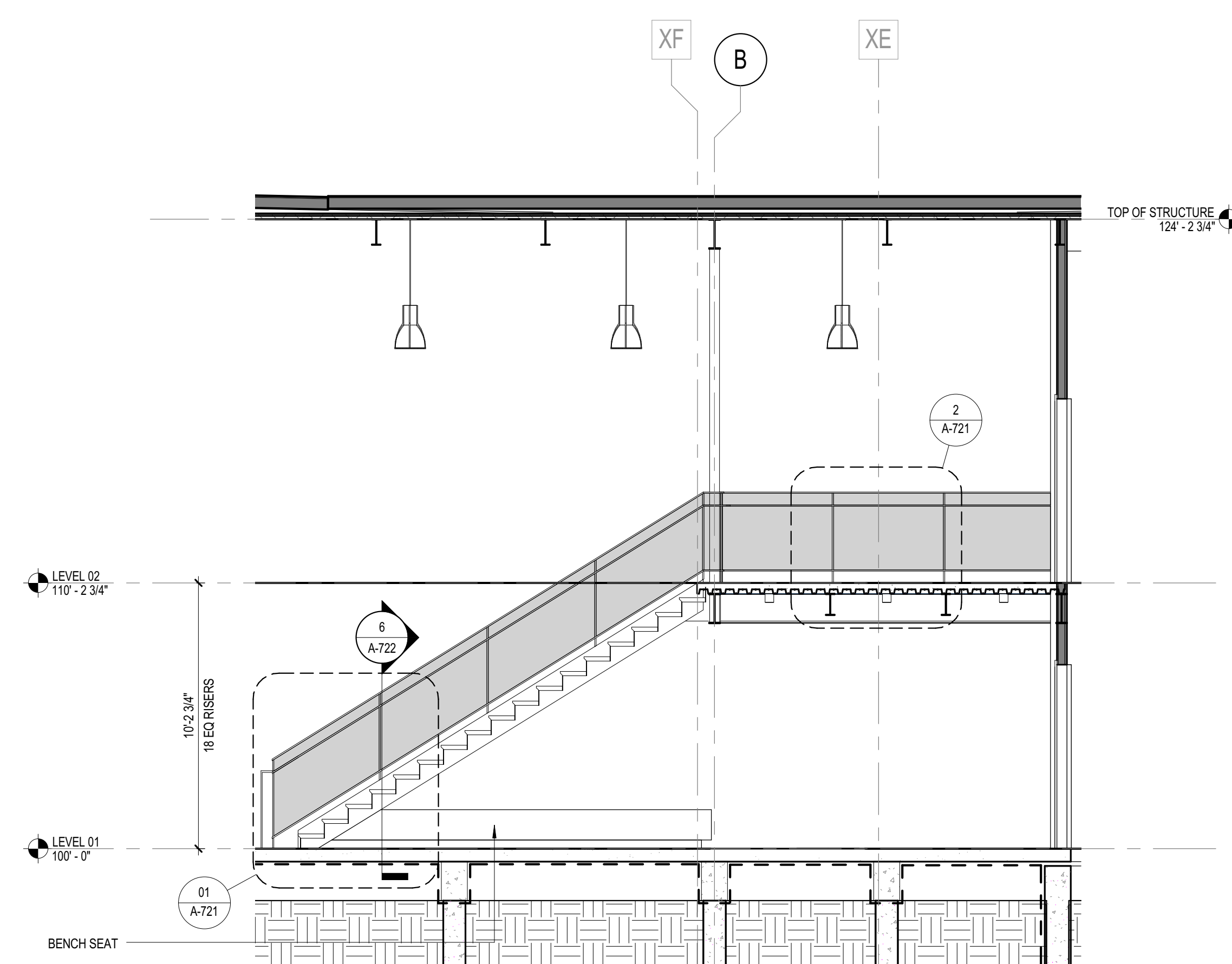
A-311



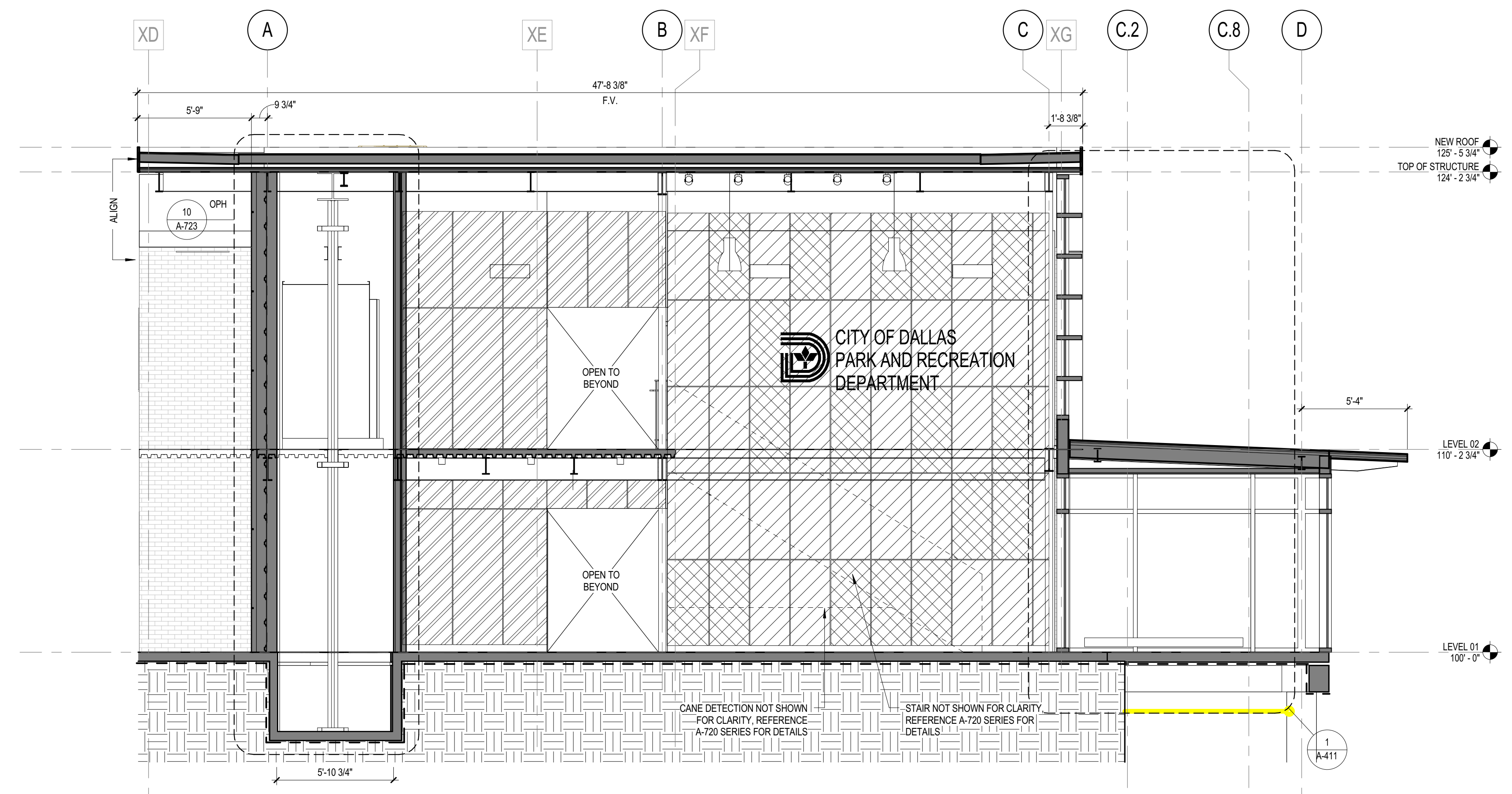
3 BUILDING SECTION - LOBBY
1/4" = 1'-0"



2 BUILDING SECTION - LOBBY
1/4" = 1'-0"



4 BUILDING SECTION - LOBBY
1/4" = 1'-0"



1 BUILDING SECTION - LOBBY
1/4" = 1'-0"