



**RCP PLAN GENERAL NOTES**

- THE CONTRACTOR SHALL COMPARE THIS REFLECTED CEILING PLAN WITH ELECTRICAL LIGHTING PLANS, MECHANICAL SUPPLY, RETURN, AND EXHAUST PLANS. THE CONTRACTOR SHALL REPORT ANY OMISSIONS OR INCONSISTENCIES TO THE ARCHITECT.
- SEE ELECTRICAL DRAWINGS FOR THE LOCATIONS OF CEILING MOUNTED SMOKE DETECTORS, SPEAKERS, EXIT SIGNAGE, FIRE ALARM DEVICES, WALL MOUNTED EXIT LIGHTS, ETC.
- FOR FURTHER DIMENSIONS SEE LARGE SCALE PLANS, SECTIONS, ELEVATIONS, AND DETAILS.
- COORDINATE GYPSUM BOARD FLURR DOWN HEIGHTS WITH FULL HEIGHT CABINETS AND INTERIOR ELEVATIONS (A-SIX SERIES).
- THE CONTRACTOR SHALL VERIFY THAT ACCESS PANELS OF TYPE SPECIFIED ARE INSTALLED IN NON-ACCESSIBLE TYPE CEILINGS WHERE SERVICE OR ADJUSTMENT TO MECHANICAL, PLUMBING, OR ELECTRICAL ITEMS MAY BE REQUIRED. ACCESS PANELS SHALL BE THE FIRE RATED TYPE EQUAL TO THE RATING OF THE CEILING IN WHICH THEY OCCUR.
- RELOCATE SUPPLY DRAIN AND VENT PIPES TO MAINTAIN SCHEDULED CEILING HEIGHTS. COORDINATE RELOCATIONS WITH MEP ENGINEERS.
- CONTRACTOR SHALL INSTALL CONTROL JOINTS IN ALL GYP. BD. CEILINGS TO COMPLY WITH THE GYPSUM ASSOCIATION. FINAL LOCATIONS TO BE COORDINATED WITH ARCHITECT PRIOR TO INSTALLATION.

**RCP LEGEND**

- SUSPENDED 2' X 2' ACOUSTICAL CEILING SYSTEM
- SUSPENDED 2' X 4' ACOUSTICAL CEILING SYSTEM
- NEW 2' X 4' SURFACE MOUNTED FLUORESCENT LIGHT FIXTURE
- NEW WALL MOUNT LINEAR SCONCE BELOW RE ELEVATIONS FOR EXACT LOCATIONS (LENGTH OF FIXTURE VARIES)
- NEW CEILING SURFACE MOUNT LIGHT FIXTURE (LENGTH OF FIXTURE VARIES)
- NEW CEILING SURFACE MOUNT WALL WASH LIGHT FIXTURE
- NEW 1' X 4' SURFACE MOUNTED LIGHT FIXTURE
- SUPPLY AIR GRILLE REFER TO MECHANICAL DRAWINGS FOR ADDITIONAL INFORMATION
- RETURN AIR GRILLE REFER TO MECHANICAL DRAWINGS FOR ADDITIONAL INFORMATION
- EXHAUST AIR GRILLE REFER TO MECHANICAL DRAWINGS FOR ADDITIONAL INFORMATION
- SUPPLY STRIP DIFFUSER RE MECHANICAL
- C.J. CONTROL JOINT
- NEW CEILING MOUNT PENDANT FIXTURE
- NEW 9' CEILING MOUNT PENDANT FIXTURE
- NEW 10' CEILING MOUNT PENDANT FIXTURE
- NEW LINEAR WALL SCONCE MOUNTED VERTICALLY
- COLUMN MOUNTED UPLIGHT. REF. DETAIL SA-051
- CEILING DETAIL / SECTION TAG
- 8'-10" AFF. CEILING HEIGHT DESIGNATION PER AREA
- UNDER COUNTER TASK LIGHTING
- ES EXPOSED STRUCTURE
- ETR EXISTING TO REMAIN AS IS
- WALL MOUNTED SECURITY CAMERA. COORDINATE WITH OWNER
- FURROWDOWN ABOVE UPPER CABINETS. REF. TYPICAL ARCHITECTURAL WOODWORK SECTIONS
- WOOD PANEL CEILING
- CONTINUOUS TRACK LIGHT FIXTURE
- GYPSUM CEILING
- METAL DECK

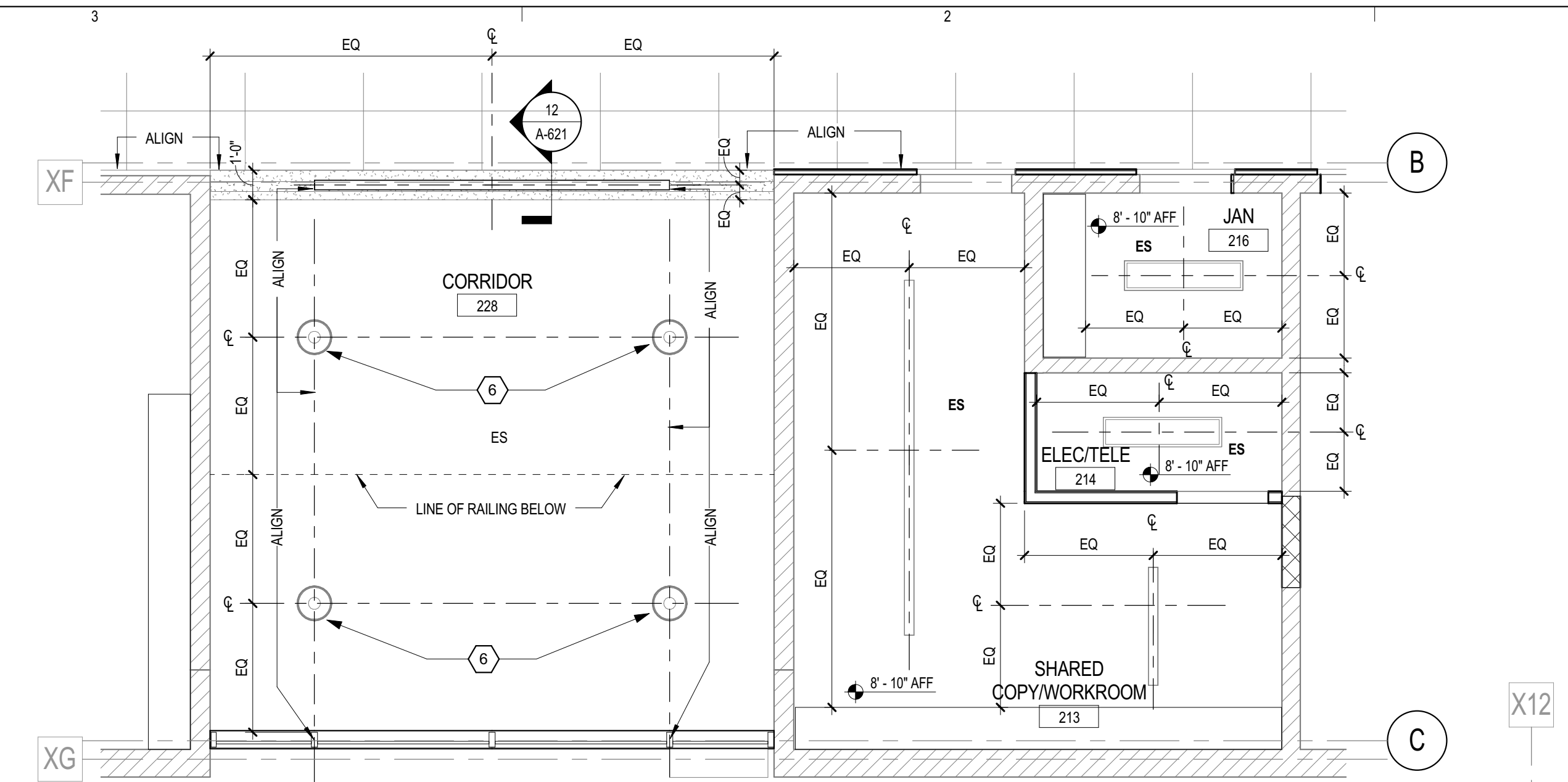
**RCP NOTES BY NUMBER**

- TONGUE AND GROOVE CEDAR SOFFIT / CEILING, ALT. #6 WEST OF GRID 6
- LIGHT FIXTURE MOUNTED TO EACH PURLIN, ALT. #6 WEST OF GRID 6
- TYPICAL WALL MOUNTED LIGHT FIXTURE IN CORRIDORS. REFERENCE ELEVATIONS FOR EXACT LOCATIONS AND MEP FOR LIGHT FIXTURE TYPE
- LED STRIP UNDER COUNTER LIGHTING AT RECEPTION DESK. REF. 01 / A-541
- EXISTING CEILING AND LIGHT FIXTURES TO REMAIN IN THIS ROOM ONLY
- MOUNT LIGHT FIXTURE AT 7'-4" A.F.F. TO BOTTOM OF FIXTURE
- NOT USED
- PAINT EXISTING CEILING P1
- 4'-0" X 4'-0" X 4" VERTICAL WALL SCONCE MOUNTED ON WALL AT 4'-0" ON CENTER A.F.F.

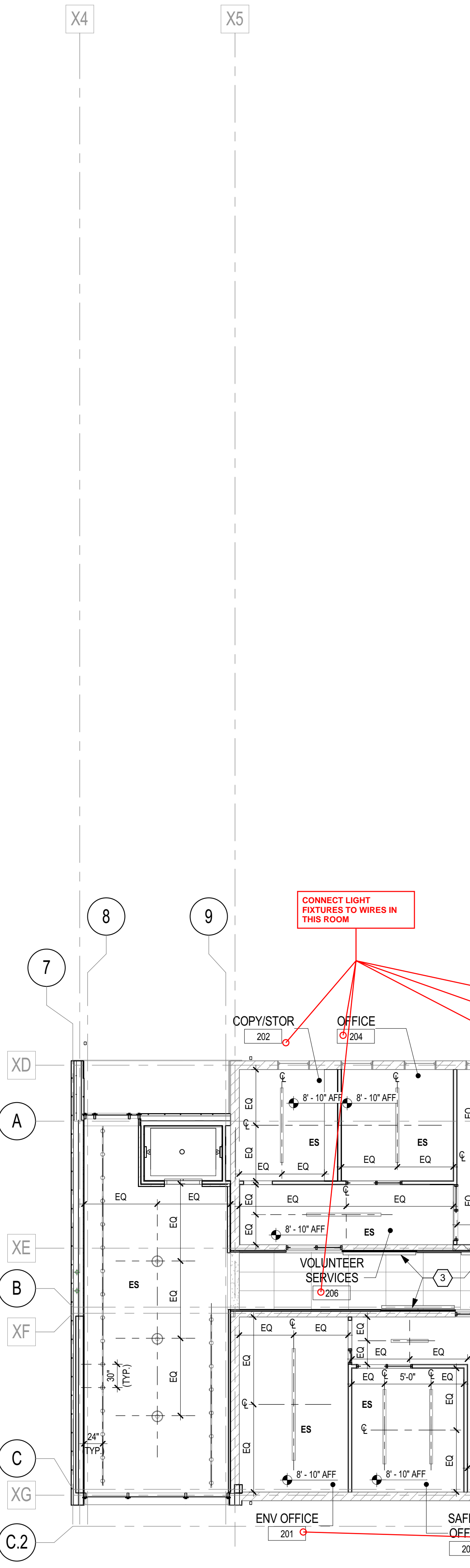
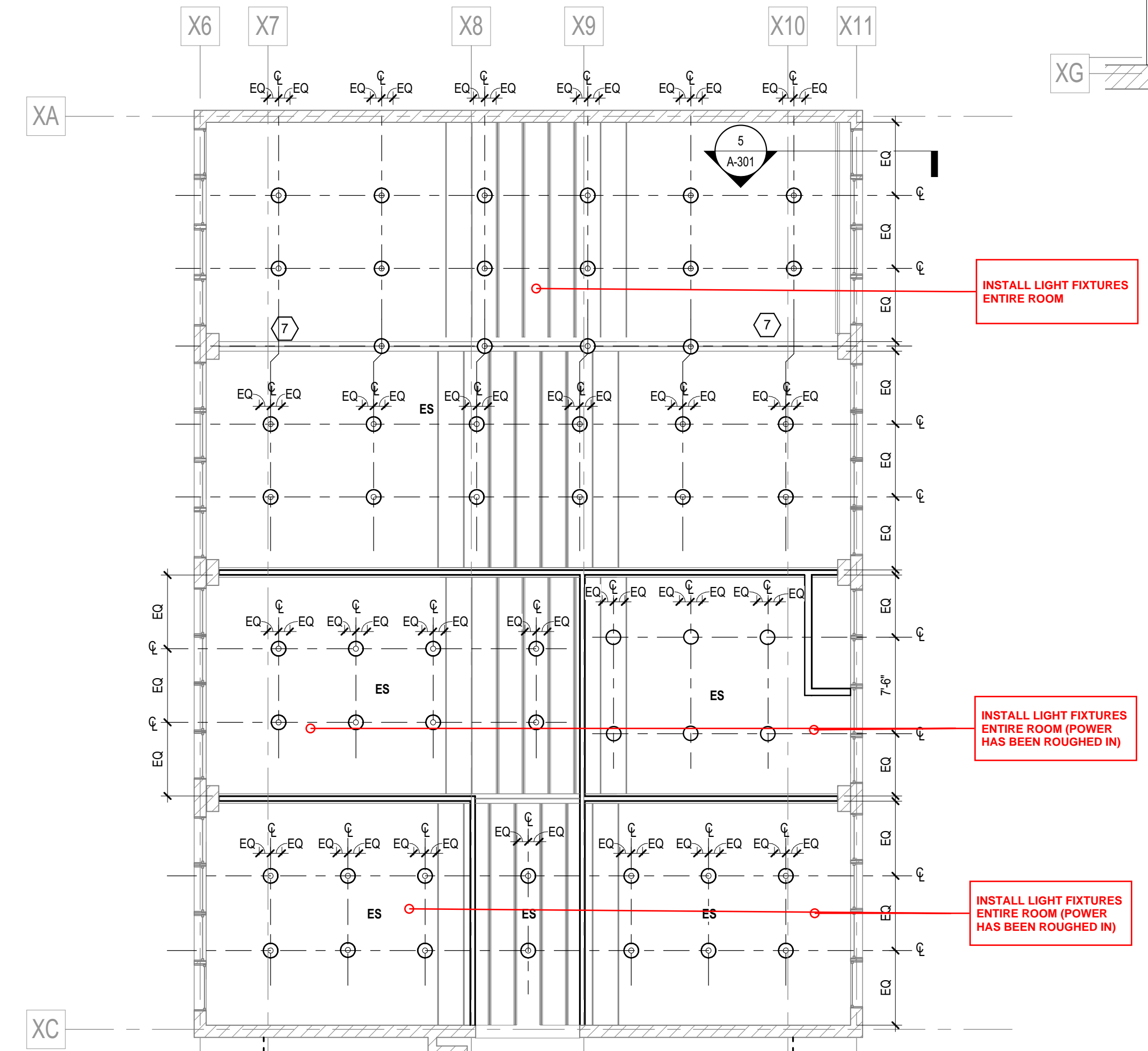
NO	ISSUE	DATE
<b>Sheet Information</b>		
Date	May 25, 2016	
Job Number	146054.000	
Drawn	NE	
Checked	TW	
Approved	RGV	

Title  
**REFLECTED  
CEILING PLAN  
LEVEL 2**

Sheet  
**A-242**



**02 ENLARGED RCP - JAN/ELEC/TELE**  
1/4" = 1'-0"



**01 REFLECTED CEILING PLAN LEVEL 2**  
1/8" = 1'-0"